



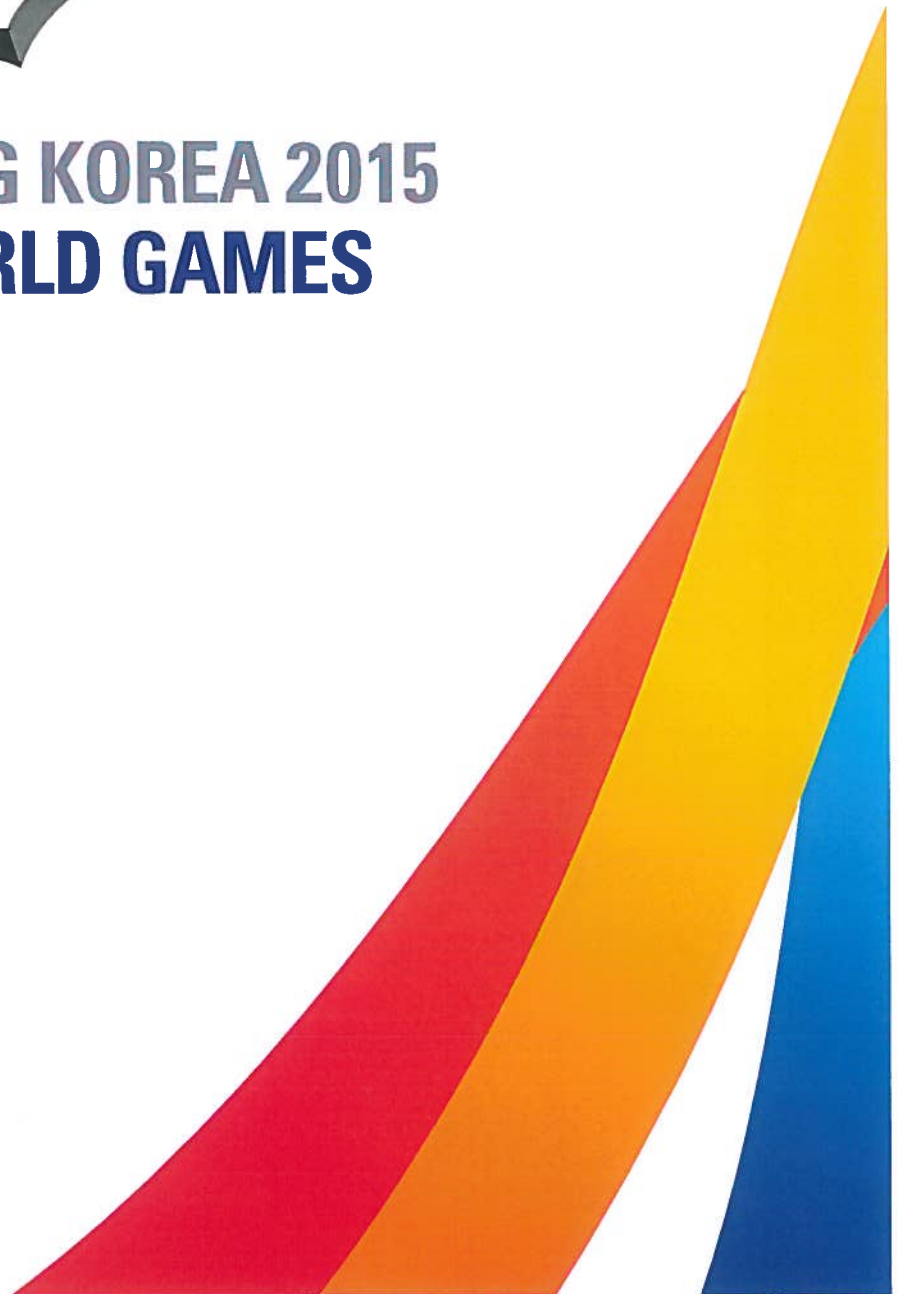
# MUNGYEONG KOREA 2015 6<sup>th</sup> CISM WORLD GAMES

INVITATION 



**CISM**

[www.cismmilsport.org](http://www.cismmilsport.org)  
[www.korea2015mwg.org](http://www.korea2015mwg.org)





INVITATION  N



**MUNGYEONG KOREA 2015**  
6<sup>th</sup> CISM World Games  
2015 경북문경 세계군인체육대회

# TABLE OF CONTENTS



<b>Invitation</b> .....	4
<b>Distribution List</b> .....	6
<b>General Information</b> .....	8
Foreword, Abbreviations, Overall Program, Sports Program, Pre-site Visit .....	8
Handbook I, Handbook II, Entry Forms .....	9
Contacts .....	10
<b>1st Preliminary Agreement</b> .....	11
Composition of the Mission .....	12
<b>2nd Preliminary Agreement</b> .....	15
Provisional Travel Information .....	16
Composition of the Mission .....	17
Athletes per discipline for Swimming and Track & Field .....	19
(Expected) Top Athletes .....	21
<b>FINAL ENTRY</b> .....	23
Definitive Travel Information .....	24
Composition of the Mission .....	25
1. Aeronautical Pentathlon (+ Declaration of weapons) .....	27
2. Archery .....	28
3. Basketball .....	29
4. Boxing .....	30
5. Cycling .....	31
6. Fencing .....	32



7. Football	33
8. Golf	35
9. Handball	36
10. Judo	37
11. Marathon	38
12. Military Pentathlon (+ Declaration of weapons)	39
13. Modern Pentathlon (+ Declaration of weapons)	40
14. Naval Pentathlon (+ Declaration of weapons)	41
15. Orienteering	42
16. Parachuting	43
17. Sailing	44
18. Shooting (+ Declaration of weapons)	45
19. Swimming	48
20. Taekwondo	51
21. Track & Field	52
22. Triathlon	58
23. Volleyball	59
24. Wrestling	60
Declaration of Drugs Form	61
Top Athletes	62
Anecdotes of Athletes	63
Commitment of Chief of Mission	64
Commitment of Chief of Delegation	65
Late Replacement Form (LRF)	66
<b>HANDBOOK I – Administrative Information</b>	<b>67</b>
<b>HANDBOOK II – Sports Information</b>	<b>95</b>

I N V I T A T I O N



MUNGYEONG  
KOREA 2015  
6<sup>th</sup> CISM World Games

May 2014

**TO:** See Distribution List

**SUBJECT:** 6th CISM World Games Mungyeong Korea 2015 - Invitation

The International Military Sports Council has entrusted the organization of the 6th CISM World Games to the Ministry of National Defense of the Republic of Korea. The Ministry of National Defense of the Republic of Korea legally constituted the 6th CISM World Games Korea 2015 Organizing Committee as responsible entity for all issues related to planning, preparation and execution of the 6th CISM World Games.

On behalf of the 6th CISM World Games Korea 2015 Organizing Committee and CISM, as well as the people of the Republic of Korea, we have the honor to invite a Mission representing your country to participate in the 6th CISM World Games Mungyeong Korea 2015, which will be held from 2 to 11 October 2015 in eight municipalities of Gyeongsangbuk Province: Mungyeong, Gimcheon, Yeongju, Andong, Sangju, Pohang, Yeongcheon, and Yecheon.

Enclosed within this invitation you will find all the necessary **Administrative Information (Handbook I)** and **Sports Information (Handbook II)**. A website has been created for the 6th CISM World Games and all important information will be updated and shared on this site regularly.

The URL of the site is <http://korea2015mwg.org>.

We sincerely hope that your participation will be possible at **the 6th CISM World Games Mungyeong Korea 2015** in order to share '**Friendship through Sport!**'



General (retired) **KIM Sang-ki**  
6th CISM World Games Organizing  
Committee Chairman



Colonel **Hamad Kalkaba Malboum**  
CISM President

Enclosures: Distribution List, General Information and Entry Forms,  
Handbook I - Administrative Information, Handbook II - Sports Information

# DISTRIBUTION LIST

## 1 CISM GOVERNING BODIES

- CISM President
- CISM Continental Vice Presidents
- CISM Board of Director Members
- CISM Secretary General
- CISM Treasurer General
- Chiefs of CISM Liaison Officers
- Presidents of CISM Commissions
- Presidents of CISM Sports Committees

## 2 CISM MEMBER NATIONS (FRENCH ALPHABETICAL ORDER) :

(Only nations with active status will be allowed to participate)

SL	COUNTRY	CODE	SL	COUNTRY	CODE	SL	COUNTRY	CODE
1	AFGHANISTAN	AFG	19	BOSNIA-HERZEGOVINA	BIH	36	IVORY COAST	CIV
2	SOUTH AFRICA	RSA	20	BOTSWANA	BOT	37	CROATIA	CRO
3	ALBANIA	ALB	21	BRAZIL	BRA	38	DENMARK	DEN
4	ALGERIA	ALG	22	BULGARIA	BUL	39	DJIBOUTI	DJI
5	GERMANY	GER	23	BURKINA FASO	BUR	40	EGYPT	EGY
6	ANGOLA	ANG	24	BURUNDI	BDI	41	UNITED ARAB EMIRATES	UAE
7	SAUDI ARABIA	KSA	25	CAMEROON	CMR	42	ECUADOR	ECU
8	ARGENTINA	ARG	26	CANADA	CAN	43	ERITREA	ERI
9	ARMENIA	ARM	27	CAPE VERDE	CPV	44	SPAIN	ESP
10	AUSTRIA.	AUT	28	CHILE	CHI	45	ESTONIA	EST
11	AZERBAIJAN	AZE	29	CHINA	CHN	46	UNITED STATES	USA
12	BAHRAIN	BRN	30	CYPRUS	CYP	47	FINLAND	FIN
13	BANGLADESH	BAN	31	COLOMBIA	COL	48	FRANCE	FRA
14	BARBADOS	BAR	32	CONGO	CGO	49	GABON	GAB
15	BELARUS	BLR	33	KOREA	KOR	50	GAMBIA	GAM
16	BELGIUM	BEL	34	D. R. OF CONGO	COD	51	GEORGIA	GEO
17	BENIN	BEN	35	D.P.R KOREA	PRK	52	GHANA	GHA
18	BOLIVIA	BOL						

SL	COUNTRY	CODE	SL	COUNTRY	CODE	SL	COUNTRY	CODE
53	GREECE	GRE	80	MALI	MLI	106	RUSSIA	RUS
54	GUATEMALA	GUA	81	MALTA	MLT	107	RWANDA	RWA
55	GUINEA	GUI	82	MOROCCO	MAR	108	SENEGAL	SEN
56	GUINEA-BISSAU	GBS	83	MAURITANIA	MTN	109	SERBIA	SRB
57	EQUATORIAL GUINEA	GEQ	84	MONACO	MON	110	SIERRA LEONE	SLE
58	HUNGARY	HUN	85	MONGOLIA	MGL	111	SLOVAKIA	SVK
59	INDIA	IND	86	MONTENEGRO	MNE	112	SLOVENIA	SLO
60	INDONESIA	IDN	87	NAMIBIA	NAM	113	SUDAN	SUD
61	IRAN	IRI	88	NIGER	NIG	114	SRI LANKA	SRI
62	IRAQ	IRQ	89	NIGERIA	NGR	115	SWEDEN	SWE
63	IRELAND	IRL	90	NORWAY	NOR	116	SWITZERLAND	SUI
64	ITALY	ITA	91	OMAN	OMA	117	SURINAME	SUR
65	JAMAICA	JAM	92	UGANDA	UGA	118	SWAZILAND	SWZ
66	JORDAN	JOR	93	UZBEKISTAN	UZB	119	SYRIA	SYR
67	KAZAKHSTAN	KAZ	94	PAKISTAN	PAK	120	TANZANIA	TAN
68	KENYA	KEN	95	PARAGUAY	PAR	121	CHAD	CHA
69	KYRGYZSTAN	KGZ	96	NETHERLANDS	NED	122	THAILAND	THA
70	KUWAIT	KUW	97	PERU	PER	123	TOGO	TOG
71	LESOTHO	LES	98	PHILIPPINES	PHI	124	TRINIDAD & TOBAGO	TRI
72	LATVIA	LAT	99	POLAND	POL	125	TUNISIA	TUN
73	LEBANON	LIB	100	PORTUGAL	POR	126	TURKEY	TUR
74	LIBYA	LBA	101	QATAR	QAT	127	UKRAINE	UKR
75	LITHUANIA	LTU	102	CENTRAL AFRICAN REPUBLIC	CAF	128	URUGUAY	URU
76	LUXEMBOURG	LUX	103	DOMINICAN REPUBLIC	DOM	129	VENEZUELA	VEN
77	F.Y.R.O. MACEDONIA	MKD	104	CZECH REPUBLIC	CZE	130	VIETNAM	VIE
78	MADAGASCAR	MAD	105	ROMANIA	ROU	131	YEMEN	YEM
79	MALAWI	MAW				132	ZAMBIA	ZAM
						133	ZIMBABWE	ZIM

### 3 GUESTS OF CISM

### 4 GUESTS OF THE ORGANIZING COMMITTEE

# GENERAL INFORMATION

## 1 FOREWORD

The purpose of this 'General Information' is to present the main aspects of the 6th CISM World Games Organizing Committee, and on how to handle the enclosed documents. The Organizing Committee will provide the invitation file to all CISM member nations:

- Through diplomatic channels (1 copy)
- Via the Chiefs of Delegations (1 copy)
- Through the 6th WG website
- Through the CISM website

For the CISM non-Member Nations, which have obtained a special permission from the Board of Directors, invitations will be extended through diplomatic channels only.

## 2 ABBREVIATIONS USED

Abbrev.	Full name
<b>MND</b>	Ministry of National Defense
<b>CISM</b>	International Military Sports Council
<b>6th WG</b>	6th CISM World Games
<b>SUMOC</b>	6th CISM World Games Organizing Committee
<b>WGPO</b>	6th CISM World Games Project Officer
<b>BoD</b>	CISM Board of Directors
<b>GA</b>	CISM General Assembly
<b>LO</b>	Liaison Officer
<b>CSC</b>	CISM Sport Committee
<b>PCSC</b>	President of CISM Sport Committee
<b>SG</b>	CISM Secretary General
<b>GS</b>	CISM General Secretariat
<b>CoD</b>	Chief of Delegation
<b>CoM</b>	Chief of Mission
<b>KAFAC</b>	Korea Armed Forces Athletic Corps

## 3 OVERALL PROGRAM

Dates	Activities
<b>9. 29 ~ 10. 1</b>	Arrivals, Training & Football Matches
<b>10. 2</b>	Opening Ceremony
<b>10. 1 ~ 11</b>	Competition and Finals
<b>10. 11</b>	Finals and Closing Ceremony
<b>10.12 ~ 13</b>	Departures

## 4 SPORTS PROGRAM

The following sports will be organized during the 6th CISM World Games.

	Full Name	Men	Women
1	Aeronautical Pentathlon	x	x
2	Archery	x	x
3	Basketball	x	-
4	Boxing	x	-
5	Cycling	x	x
6	Fencing	x	x
7	Football	x	x
8	Golf	x	x
9	Handball	x	-
10	Judo	x	x
11	Marathon	x	x
12	Military Pentathlon	x	x
13	Modern Pentathlon	x	x
14	Naval Pentathlon	x	x
15	Orienteering	x	x
16	Parachuting	x	x
17	Sailing	Mixed	x
18	Shooting	x	x
19	Swimming	x	x

20	Taekwondo	x	x
21	Track & Field	x	x
22	Triathlon	x	x
23	Volleyball	x	x
24	Wrestling	x	-

## 5 ON-SITE EVALUATION VISIT

On-site evaluation visits will be possible from March 2014 onwards.

Official on-site evaluation visits will be conducted through the CISM CC, and the detailed agenda and evaluation contents to be decided through advanced discussion with SUMOC. Arbitrary on-site evaluation visits without the official approval of SUMOC and the CISM CC are limited as a principle.

For visits other than the those of the CISM CC, the costs (local transportation, accommodation, food, etc.) shall be borne by the visiting Delegation.

## 6 HANDBOOK I - ADMINISTRATIVE INFORMATION

This handbook presents a brief history and overview of the Republic of Korea and the eight Host Cities of Gyeongsangbuk-do Province.

The Handbook also contains information on the rules that will be applied before and during the 6th WG, the facilities provided by the Organizing Committee, as well as pertinent information on the procedures for participation in the Games, such as:

- How to reach Korea
- Rules of Participation
- Rules of Arrival and Departure
- Rules of Stay
- Board and Lodging
- Local Transportation
- Medical Care
- Security of the Participants
- Others

## 7 HANDBOOK II - SPORTS INFORMATION

This handbook contains:

- Sports Authorities
- Official Meetings
- World Records
- Awards
- Anti-doping Regulations for all sports.
- Team Sports Qualification Rules
- The General Schedule of Events
- Detailed Information on Each Discipline
  - 1) Specific Program and Conditions for each sport
  - 2) Composition of Missions and Teams
  - 3) Program
  - 4) Venue
  - 5) Contact

## 8 ENTRY FORMS

Reply to this Invitation is made ONLY by using the entry forms attached as follows:

Form	Contents	Deadline
1st PRELIMINARY AGREEMENT	<ul style="list-style-type: none"> <li>• Mission Composition:               <ul style="list-style-type: none"> <li>- Authorities</li> <li>- Officials</li> <li>- Athletes</li> <li>* Per sport</li> <li>* Per gender</li> </ul> </li> </ul>	1 OCT 2014  23:59 (GMT+9)
2nd PRELIMINARY AGREEMENT	<ul style="list-style-type: none"> <li>• Provisional travel information</li> <li>• Mission Composition:               <ul style="list-style-type: none"> <li>- Authorities</li> <li>- Officials</li> <li>- Athletes</li> <li>* Per sport</li> <li>* Per gender</li> <li>* Per discipline (Swimming, Track &amp; Field)</li> </ul> </li> <li>• List of Top Athletes (expected)</li> </ul>	15 MAR 2015  23:59 (GMT+9)

FINAL ENTRY	• Definitive travel information	
	• Mission Composition:	
	- Authorities	
	- Officials	
	- Athletes	
	* Per sport	1 AUG
	* Per gender	2015
	* Per discipline	
	• Declaration of weapons and ammunitions	23:59
	• Declaration of Drugs Form	(GMT+9)
• List of Top Athletes		
• Anecdotes of Athletes		
• Commitment of the CoM		
• Commitment of the CoD		
• Late Replacement Form (LRF)		

1. All correspondence between SUMOC and CISM Delegations will be made in English.
2. All names mentioned in agreements must be written in Latin letters as stated in the passport.
3. For Team sports, only a restricted number of qualified teams may participate. The rules for qualification are explained in "Handbook II - Sports Information."

The Organizing Committee will only accept entries from Missions that have respected the deadlines set for submission. Missions that fail to meet the deadlines may be refused to participate in the 6th CISM World Games.

Your response to the invitation is done in the following way.

- 1st Preliminary Agreement : E-mail
- 2nd/Final Agreement : Website

The invitation can be submitted through the following.

**The Official 6th WG Website**

**Website : <http://korea2015mwg.org>**  
**E-Mail : [invitation@korea2015mwg.org](mailto:invitation@korea2015mwg.org)**

- The online registration system and instructions will be available on the Games Website.
- For the creation of ID cards during the Games, participants must upload a recent photograph (taken within 6 months) of themselves to the system.

## 9 CONTACTS

For official correspondence concerning the 6th CISM World Games, please contact:

6th CISM World Games Mungyeong Korea 2015 Organizing Committee	
Address:	Itaewonro 22, Yongsan-gu, Seoul, Korea
Tel:	+82 2 748 5666
Fax:	+82 2 748 5675
E-Mail:	cismmwg2015@gmail.com invitation@korea2015mwg.org
Website:	<a href="http://korea2015mwg.org">http://korea2015mwg.org</a>

Conseil International du Sport Militaire	
Address:	26 Rue Jacques Jordaens 1000 Brussels, Belgium
6th CISM WGPO:	Olivier Verhelle +32 2 647 6852 olivier.verhelle@cism-milспорт.com
CISM LO:	Maj. Cheolsu LEE +32 2 647 0282 chul.soo.lee@cism-milспорт.com
Fax:	+32 2 647 5387
Website:	<a href="http://cismmilспорт.org">http://cismmilспорт.org</a>



MUNGYEONG KOREA 2015  
6<sup>th</sup> CISM World Games

# 1st Preliminary Agreement

**TO BE RETURNED BEFORE  
1 OCTOBER 2014**



**CISM**



# 1st Preliminary Agreement

TO BE RETURNED BEFORE 1 OCTOBER 2014



COUNTRY

## COMPOSITION OF THE MISSION

### 1. AUTHORITIES AND PARTICIPANTS

Category (*)	Authorities (*)	No. of Participants	
		Men	Women
VVIP			
CISM VIP (a)			
CISM VIP (b)			
1			
		DEPUTY CHIEF OF MISSIONS (IF REQUIRED) (**)	
2	OFFICIAL PRESS		

(\*) Categories considered for lodging according to the table of Handbook I 7.2.

(\*\*) When the size of the Mission exceeds 30 individuals, every country can designate a Deputy Chief of Mission according to the table of item 5.1.3.2. of Handbook I

DATE	SIGNATURE OF CHIEF OF DELEGATION	RANK / NAME	E - MAIL

COUNTRY

## 2. OFFICIALS AND ATHLETES

SPORT	SPORTS OFFICIALS										ATHLETES		Total (b)
	Team Captain		Trainer / Coach		Medical Staff		Referee / Judge		Ad Libitum		M	W	
	M(b)	W(b)	M	W	M	W	M	W	M	W			
Aeronautical Pentathlon	1		1								5	4	11
Archery	1		2(a)								4/(c)	4/(c)	11/(c)
Basketball	1		2				2				12		17
Boxing	1		3		1		2				10		17
Cycling	1		1		1				1		10	6	20
Fencing	1		3		1		3				9	9	26
Football	2(a)		4(a)		4(a)		6(a)				21	21	58
Golf	1										6	2	9
Handball	1		1		1		2				16		21
Judo	1		2(a)				1		1		9	9	23
Marathon	With Track & Field		1						1		3	3	8
Military Pentathlon	1		2(a)		1						6	4	14
Modern Pentathlon	1		3				1				4	4	13
Naval Pentathlon	1		2(a)						1		5	3	12
Orienteering	1		1								7	4	13
Parachuting	1		1				1		1		5	5	14
Sailing	1		1								3(mix)	3	8
Shooting	2		6				2				12	12	34
Swimming	1		2		1						6	6	16
Taekwondo	1		2(a)		1		2				8	8	22
Track & Field	1		3		1						25/(c)		30/(c)
Triathlon	1		1		1		1				9	8	21
Volleyball	2(a)		4(a)		2(a)		2(a)				12	12	34
Wrestling	1		3		1		3				16		24
TOTAL MEN													
TOTAL WOMEN													

(a) Maximum for missions with men and women teams. For those with only one gender, the maximum is half the number.

(b) Each number indicates the maximum possible; refer to the 'Composition of Mission' for all sports in Handbook II.

(c) Disabled athletes are written separately after the slash (/).

DATE	SIGNATURE OF CHIEF OF DELEGATION	RANK / NAME	E - MAIL





MUNGYEONG KOREA 2015  
6<sup>th</sup> CISM World Games

# 2nd Preliminary Agreement

**TO BE RETURNED BEFORE  
15 MARCH 2015**



**CISM**



# 2nd Preliminary Agreement

TO BE RETURNED BEFORE 15 MARCH 2015



COUNTRY

## PROVISIONAL TRAVEL INFORMATION

Means of Transport	Mark "✓"	Arrival			Departure		
		Date	Time	Place	Date	Time	Place
Plane	Commercial						
	Military						
	Charter						

Destination	Group (**)	Arrival				Departure			
		Flight	Date	Time	No. of People	Flight	Date	Time	No. of People
Incheon Int'l Airport (ICN) (*)	1								
	2								
	3								
	4								
	5								
	6								
	7								
	8								

(\*) Please arrive at Incheon International Airport (ICN). Arrival at a different airport by aircraft must be approved by SUMOC.

(\*\*) If your mission is arriving/departing split into various groups, please specify the different flights for each group.

Your Contact	
Rank / Name	
Phone	
Fax	
E-mail	

DATE	SIGNATURE OF CHIEF OF DELEGATION	RANK / NAME	E - MAIL



# 2nd Preliminary Agreement

TO BE RETURNED BEFORE 15 MARCH 2015



COUNTRY

## COMPOSITION OF THE MISSION

### 1. AUTHORITIES AND PARTICIPANTS

Category (*)	Authorities (*)	No. of Participants	
		Men	Women
VVIP			
CISM VIP (a)			
CISM VIP (b)			
1			
		DEPUTY CHIEF OF MISSIONS (IF REQUIRED) (**)	
2	OFFICIAL PRESS		

(\*) Categories considered for lodging according to the table of Handbook I 7.2.

(\*\*) When the size of the Mission exceeds 30 individuals, every country can designate a Deputy Chief of Mission according to the table of item 5.1.3.2. of Handbook I

DATE	SIGNATURE OF CHIEF OF DELEGATION	RANK / NAME	E - MAIL

COUNTRY

## 2. OFFICIALS AND ATHLETES

SPORT	SPORTS OFFICIALS										ATHLETES		Total (b)
	Team Captain		Trainer / Coach		Medical Staff		Referee / Judge		Ad Libitum		M	W	
	M(b)	W(b)	M	W	M	W	M	W	M	W			
Aeronautical Pentathlon	1		1								5	4	11
Archery	1		2(a)								4/(c)	4/(c)	11/(c)
Basketball	1		2				2				12		17
Boxing	1		3		1		2				10		17
Cycling	1		1		1				1		10	6	20
Fencing	1		3		1		3				9	9	26
Football	2(a)		4(a)		4(a)		6(a)				21	21	58
Golf	1										6	2	9
Handball	1		1		1		2				16		21
Judo	1		2(a)				1		1		9	9	23
Marathon	With Track & Field		1						1		3	3	8
Military Pentathlon	1		2(a)		1						6	4	14
Modern Pentathlon	1		3				1				4	4	13
Naval Pentathlon	1		2(a)						1		5	3	12
Orienteering	1		1								7	4	13
Parachuting	1		1				1		1		5	5	14
Sailing	1		1								3(mix)	3	8
Shooting	2		6				2				12	12	34
Swimming	1		2		1						6	6	16
Taekwondo	1		2(a)		1		2				8	8	22
Track & Field	1		3		1						25/(c)		30/(c)
Triathlon	1		1		1		1				9	8	21
Volleyball	2(a)		4(a)		2(a)		2(a)				12	12	34
Wrestling	1		3		1		3				16		24
TOTAL MEN													
TOTAL WOMEN													

(a) Maximum for missions with men and women teams. For those with only one gender, the maximum is half the number.

(b) Each number indicates the maximum possible; refer to the 'Composition of Mission' for all sports in Handbook II.

(c) Disabled athletes are written separately after the slash (/).

DATE	SIGNATURE OF CHIEF OF DELEGATION	RANK / NAME	E - MAIL



# 2nd Preliminary Agreement

TO BE RETURNED BEFORE 15 MARCH 2015



COUNTRY

## ATHLETES FOR SWIMMING AND TRACK & FIELD

### 1. SWIMMING

	DISCIPLINES	NUMBER OF PARTICIPANTS	
		MEN(*)	WOMEN(*)
Freestyle	50m		
	100m		
	200m		
	400m		
	800m	(**)	
	1,500m		(**)
Backstroke	50m		
	100m		
	200m		
Breaststroke	50m		
	100m		
	200m		
Butterfly	50m		
	100m		
	200m		
Individual Medley	200m		
	400m		(**)
Relay	4x100m Freestyle		
	4x200m Freestyle		(**)
	4x100m Medley		
Mixed Relay	4x100m Freestyle		
	4x100m Medley		

(\*) Maximum 2 athletes per individual discipline and 1 team for relay.

(\*\*) Event not held.

DATE	SIGNATURE OF CHIEF OF DELEGATION	RANK / NAME	E - MAIL



# 2nd Preliminary Agreement

TO BE RETURNED BEFORE 15 MARCH 2015



COUNTRY

## 1. TRACK & FIELD

DISCIPLINES	NUMBER OF PARTICIPANTS			
	Men(*)	Women(*)	Disabled Athletes	
			Men	Women
100m				
200m				
400m			(***)	(***)
800m			(***)	(***)
1,500m				
5,000m			(***)	(***)
10,000m		(***)	(***)	(***)
100m Hurdles	(***)		(***)	(***)
110m Hurdles		(***)	(***)	(***)
400m Hurdles			(***)	(***)
3,000m Steeplechase			(***)	(***)
4x100m Relay			(***)	(***)
4x400m Relay			(***)	(***)
High Jump			(***)	(***)
Long Jump			(***)	(***)
Triple Jump			(***)	(***)
Pole Vault			(***)	(***)
Shot put				
Discus			(***)	(***)
Javelin			(***)	(***)
Hammer			(***)	(***)
Marathon (**)			(***)	(***)

(\*) Maximum 2 athletes per individual discipline and 1 team for relay.

(\*\*) Maximum 3 athletes, per gender

(\*\*\*) Event not held.

DATE	SIGNATURE OF CHIEF OF DELEGATION	RANK / NAME	E - MAIL







**MUNGYEONG KOREA 2015**  
6<sup>th</sup> CISM World Games

# **FINAL ENTRY**

**TO BE RETURNED BEFORE  
1 AUGUST 2015**



**CISM**



# FINAL ENTRY

TO BE RETURNED BEFORE 1 AUGUST 2015



COUNTRY

## DEFINITIVE TRAVEL INFORMATION

Means of Transport		Mark "✓"	Arrival			Departure		
			Date	Time	Place	Date	Time	Place
Plane	Commercial							
	Military							
	Charter							

Destination	Group (**)	Arrival				Departure			
		Flight	Date	Time	No. of People	Flight	Date	Time	No. of People
Incheon Int'l Airport (ICN) (*)	1								
	2								
	3								
	4								
	5								
	6								
	7								
	8								

(\*) Please to arrive at Incheon International Airport (ICN). Arrival at a different airport by aircraft must be approved by SUMOC.

(\*\*) If your mission is arriving/departing split into various groups, please specify the different flights for each group

List the sports which are coming in each group.

Group	Sports	Group	Sports
1		5	
2		6	
3		7	
4		8	

### Your Contact

Rank / Name	
Phone	
Fax	
E-mail	

DATE	SIGNATURE OF CHIEF OF DELEGATION	RANK / NAME	E - MAIL



# FINAL ENTRY

TO BE RETURNED BEFORE 1 AUGUST 2015



COUNTRY

## COMPOSITION OF THE MISSION

### 1. AUTHORITIES AND PARTICIPANTS

Category (*)	Authorities (*)	No. of Participants	
		Men	Women
VVIP			
CISM VIP (a)			
CISM VIP (b)			
1			
	DEPUTY CHIEF OF MISSIONS (IF REQUIRED) (**)		
2	OFFICIAL PRESS		

(\*) Categories considered for lodging according to the table of Handbook I 7.2.

(\*\*) When the size of the Mission exceeds 30 individuals, every country can designate a Deputy Chief of Mission according to the table of item 5.1.3.2. of Handbook I

DATE	SIGNATURE OF CHIEF OF DELEGATION	RANK / NAME	E - MAIL

COUNTRY

## 2. OFFICIALS AND ATHLETES

SPORT	SPORTS OFFICIALS										ATHLETES		Total (b)
	Team Captain		Trainer / Coach		Medical Staff		Referee / Judge		Ad Libitum		M	W	
	M(b)	W(b)	M	W	M	W	M	W	M	W			
Aeronautical Pentathlon	1		1								5	4	11
Archery	1		2(a)								4/(c)	4/(c)	11/(c)
Basketball	1		2				2				12		17
Boxing	1		3		1		2				10		17
Cycling	1		1		1				1		10	6	20
Fencing	1		3		1		3				9	9	26
Football	2(a)		4(a)		4(a)		6(a)				21	21	58
Golf	1										6	2	9
Handball	1		1		1		2				16		21
Judo	1		2(a)				1		1		9	9	23
Marathon	With Track & Field		1						1		3	3	8
Military Pentathlon	1		2(a)		1						6	4	14
Modern Pentathlon	1		3				1				4	4	13
Naval Pentathlon	1		2(a)						1		5	3	12
Orienteering	1		1								7	4	13
Parachuting	1		1				1		1		5	5	14
Sailing	1		1								3(mix)	3	8
Shooting	2		6				2				12	12	34
Swimming	1		2		1						6	6	16
Taekwondo	1		2(a)		1		2				8	8	22
Track & Field	1		3		1						25/(c)		30/(c)
Triathlon	1		1		1		1				9	8	21
Volleyball	2(a)		4(a)		2(a)		2(a)				12	12	34
Wrestling	1		3		1		3				16		24
<b>TOTAL MEN</b>													
<b>TOTAL WOMEN</b>													

- (a) Maximum for missions with men and women teams. For those with only one gender, the maximum is half the number.  
 (b) Each number indicates the maximum possible; refer to the 'Composition of Mission' for all sports in Handbook II.  
 (c) Disabled athletes are written separately after the slash (/).

DATE	SIGNATURE OF CHIEF OF DELEGATION	RANK / NAME	E - MAIL



# FINAL ENTRY

TO BE RETURNED BEFORE 1 AUGUST 2015



COUNTRY

## ATHLETES/OFFICIALS

### 1. AERONAUTICAL PENTATHLON

a) Mission

Function	No.	Rank	Surname	Given Name	Gender (M/W)
<b>Team Captain</b>	1				
<b>Coach</b>	1				
Function	No.(**)	Rank	Surname	Given Name	Flying Contest Participation(*)
<b>Athletes Men</b>	1				
	2				
	3				
	4				
<b>Men Reserve</b>	5				
<b>Athletes Women</b>	6				
	7				
	8				
<b>Women Reserve</b>	9				

(\*) Only 2 athletes per nation can enter in the Flying Contest (male or female).

b) Declaration of weapons

No.(**)	Type of weapon	Manufacturer	Serial Number	Ammunition	
				Caliber	Quantity
1					
2					
3					
4					
5					
6					
7					
8					
9					
<b>Total Ammunition</b>					

(\*\*) Corresponding to the sequence of the athlete. Weapons and ammunition must follow the user in the same flight.

DATE	SIGNATURE OF CHIEF OF DELEGATION	RANK / NAME	E - MAIL



# FINAL ENTRY

TO BE RETURNED BEFORE 1 AUGUST 2015



COUNTRY

## 2. ARCHERY

Function	No.	Rank	Surname	Given Name	Gender (M/W)
Team Captain	1				
Coach Men	1				
Coach Women	1				
Function	No.	Rank	Surname	Given Name	N.B.
Athletes Men	4				
Athletes Men (Disabled)*					
Function	No.	Rank	Surname	Given Name	N.B.
Athletes Women	4				
Athletes Women (Disabled)*					

(\*) There is no limit in the number of participants for disabled athletes. Lines may be added if needed.

DATE	SIGNATURE OF CHIEF OF DELEGATION	RANK / NAME	E - MAIL



# FINAL ENTRY

TO BE RETURNED BEFORE 1 AUGUST 2015



COUNTRY

## 3. BASKETBALL

Function	No.	Rank	Surname	Given Name	Gender (M/W)
Team Captain	1				
Coach	1				
Trainer	1				
International Referee (FIBA)	2				
Function	No.	Rank	Surname	Given Name	
Athletes	12				

DATE	SIGNATURE OF CHIEF OF DELEGATION	RANK / NAME	E - MAIL



# FINAL ENTRY

TO BE RETURNED BEFORE 1 AUGUST 2015



COUNTRY

## 4. BOXING

Function	No.	Rank	Surname	Given Name	Gender (M/W)
Team Captain	1				
Coach	3				
Medical staff	1				
International Referee (AIBA)	2(*)				
Function	Weight	Rank	Surname	Given Name	
Athletes	+46 ~ 49kg				
	+49 ~ 52kg				
	+52 ~ 56kg				
	+56 ~ 60kg				
	+60 ~ 64kg				
	+64 ~ 69kg				
	+69 ~ 75kg				
	+75 ~ 81kg				
	+81 ~ 91kg				
	+91kg				

(\*) If the nation has 1 to 6 competitors, the mission shall bring one(1) International Referee (AIBA). If it has 7 to 10 athletes, the mission shall bring two(2) International Referees (AIBA).

DATE	SIGNATURE OF CHIEF OF DELEGATION	RANK / NAME	E - MAIL



# FINAL ENTRY

TO BE RETURNED BEFORE 1 AUGUST 2015



COUNTRY

## 5. CYCLING

Function	No.	Rank	Surname	Given Name	Gender (M/W)
Team Captain	1				
Coach	1				
Medical staff	1				
Mechanic	1				

Function	No.	Rank	Surname	Given Name	Events(✓)(* )		
					Road Race(**)	Time Trial(***)	
Athletes Men	10						
Athletes Women	6						

(\*) It is possible for an athlete to participate in both the road race and the time trial. Please make a check mark for each participating event, keeping in mind the maximum participation per event. The final participation for each event will be confirmed at the Preliminary Meeting.

(\*\*) Max 8 men/4 women athletes per country.

(\*\*\*) 2 men, 2 women

DATE	SIGNATURE OF CHIEF OF DELEGATION	RANK / NAME	E - MAIL



# FINAL ENTRY

TO BE RETURNED BEFORE 1 AUGUST 2015



COUNTRY

## 6. FENCING

Function	No.	Rank	Surname	Given Name	Gender (M/W)
Team Captain	1				
Medical staff	1				
<b>ÉPÉE</b>					
Coach	1				
Referee (FIE)*	1				
Athletes Men	3				
Athletes Women	3				
<b>FOIL</b>					
Coach	1				
Referee (FIE)*	1				
Athletes Men	3				
Athletes Women	3				
<b>SABRE</b>					
Coach	1				
Referee (FIE)*	1				
Athletes Men	3				
Athletes Women	3				

(\*) Only if the nation has a competitor for the weapon.

DATE	SIGNATURE OF CHIEF OF DELEGATION	RANK / NAME	E - MAIL



# FINAL ENTRY

TO BE RETURNED BEFORE 1 AUGUST 2015



COUNTRY

## 7. FOOTBALL

a) Mission

Function	No.	Team (*)	Rank	Surname	Given Name	Gender (M/W)
<b>Team Captain</b>	1	M				
	1	W				
<b>Coach</b>	1	M				
	1	W				
<b>Assistant Coach</b>	1	M				
	1	W				
<b>Medical staff</b>	2	M				
	2	W				
<b>International Referee (FIFA)</b>	1	M				
	1	W				
<b>Assistant Referee (FIFA)</b>	1	M				
	1	W				
<b>Match Delegate</b>	1	M				
	1	W				

(\*) Corresponding to men's or women's team, depending on which was qualified to participate.

DATE	SIGNATURE OF CHIEF OF DELEGATION	RANK / NAME	E - MAIL





# FINAL ENTRY

TO BE RETURNED BEFORE 1 AUGUST 2015



COUNTRY

## 8. GOLF

Function	No.	Rank	Surname	Given Name	Gender (M/W)
Team Captain	1				
Function	No.	Rank	Surname	Given Name	Date of Birth
Athletes Men	6				. . .
					. . .
					. . .
					. . .
					. . .
					. . .
Athletes Women	2				. . .
					. . .

DATE	SIGNATURE OF CHIEF OF DELEGATION	RANK / NAME	E - MAIL



# FINAL ENTRY

TO BE RETURNED BEFORE 1 AUGUST 2015



COUNTRY

## 9. HANDBALL

Function	No.	Rank	Surname	Given Name	Gender (M/W)	
Team Captain	1					
Coach	1					
Medical staff	1					
IHF Referee or continental level referee candidate	2					
Function	No.	Rank	Surname	Given Name		
Athletes Men	16					

DATE	SIGNATURE OF CHIEF OF DELEGATION	RANK / NAME	E - MAIL



# FINAL ENTRY

TO BE RETURNED BEFORE 1 AUGUST 2015



COUNTRY

## 10. JUDO

Function	No.	Rank	Surname	Given Name	Gender (M/W)
Team Captain	1				
Coach Men	1				
Coach Women	1				
Ad libitum	1				
International Referee (IJF)	1				

Function	No.	Rank	Surname	Given Name	Weight
Athletes Men	7				-60kg
					-66kg
					-73kg
					-81kg
					-90kg
					-100kg
					+100kg
Men Reserve	2				

Function	No.	Rank	Surname	Given Name	Weight
Athletes Women	7				-48kg
					-52kg
					-57kg
					-63kg
					-70kg
					-78kg
					+78kg
Women Reserve	2				

DATE	SIGNATURE OF CHIEF OF DELEGATION	RANK / NAME	E - MAIL



# FINAL ENTRY

TO BE RETURNED BEFORE 1 AUGUST 2015



COUNTRY

## 11. MARATHON

Function	No.	Rank	Surname	Given Name	Best Performance
Coach	1				
Ad Libitum	1				
Function	No.	Rank	Surname	Given Name	Best Performance
Athletes Men	3				
Athletes Women	3				

\* Other mission members (officials) are integrated with Track & Field.

DATE	SIGNATURE OF CHIEF OF DELEGATION	RANK / NAME	E - MAIL



# FINAL ENTRY

TO BE RETURNED BEFORE 1 AUGUST 2015



COUNTRY

## 12. MILITARY PENTATHLON

a) Mission

Function	No.	Rank	Surname	Given Name	Gender (M/W)
Team Captain	1				
Coach Men	1				
Coach Women	1				
Medical staff	1				
Function	No.(*)	Rank	Surname	Given Name	New Athletes
Athletes Men	1				
	2				
	3				
	4				
	5				
	6				
Athletes Women	7				
	8				
	9				
	10				

b) Declaration of weapons and ammunitions.

No. (*)	Type of weapon	Manufact -urer	Serial Number	Ammunition		No. (*)	Type of weapon	Manufact -urer	Serial Number	Ammunition	
				Caliber	Quantity					Caliber	Quantity
1						6					
2						7					
3						8					
4						9					
5						10					
<b>Total Ammunition</b>											

(\*) Corresponding to the sequence of the athlete. Weapons and ammunition must follow the user in the same flight.

c) Obstacle Relay Participation

Team	Yes	No
Men		
Women		

DATE	SIGNATURE OF CHIEF OF DELEGATION	RANK / NAME	E - MAIL



# FINAL ENTRY

TO BE RETURNED BEFORE 1 AUGUST 2015



COUNTRY

## 13. MODERN PENTATHLON

a) Mission

Function	No.	Rank	Surname	Given Name	Gender (M/W)
Team Captain	1				
Coach Men	1				
Coach Women	1				
Fencing Coach	1				
Int'l Referee (Fencing UIPM)	1				
Function	No. (*)	Rank	Surname	Given Name	
Athletes Men	1				
	2				
	3				
	4				
Athletes Women	5				
	6				
	7				
	8				

b) Declaration of weapons and ammunitions.

No. (*)	Type of weapon	Manufacturer	Serial Number	Ammunition (Quantity)
1				
2				
3				
4				
5				
6				
7				
8				
<b>Total Ammunition</b>				

(\*) Corresponding to the sequence of the athlete. Weapons and ammunition must follow the user in the same flight.

DATE	SIGNATURE OF CHIEF OF DELEGATION	RANK / NAME	E - MAIL



# FINAL ENTRY

TO BE RETURNED BEFORE 1 AUGUST 2015



COUNTRY

## 14. NAVAL PENTATHLON

a) Mission

Function	No.	Rank	Surname	Given Name	Gender (M/W)
Team Captain	1				
Coach Men	1				
Coach Women	1				
Ad libitum	1				
Function	No. (*)	Rank	Surname	Given Name	
Athletes Men	1				
	2				
	3				
	4				
	5				
Athletes Women	6				
	7				
	8				

b) Declaration of weapons and ammunitions.

No. (*)	Type of weapon	Manufacturer	Serial Number	Ammunition	
				Caliber	Quantity
1					
2					
3					
4					
5					
6					
7					
8					
<b>Total Ammunition</b>					

(\*) Corresponding to the sequence of the athlete. Weapons and ammunition must follow the user in the same flight.

DATE	SIGNATURE OF CHIEF OF DELEGATION	RANK / NAME	E - MAIL



# FINAL ENTRY

TO BE RETURNED BEFORE 1 AUGUST 2015



COUNTRY

## 15. ORIENTEERING

Function	No.	Rank	Surname	Given Name	Gender (M/W)
Team Captain	1				
Coach/Trainer	1				
Function	No.	Rank	Surname	Given Name	
Athletes Men	7				
Athletes Women	4				

DATE	SIGNATURE OF CHIEF OF DELEGATION	RANK / NAME	E - MAIL



# FINAL ENTRY

TO BE RETURNED BEFORE 1 AUGUST 2015



COUNTRY

## 16. PARACHUTING

Function	No.	Rank	Surname	Given Name	Gender (M/W)
Team Captain	1				
Coach/Trainer	1				
International Referee (FAI or CISM)	1				
Video Cameraman	1				
Function	No.	Rank	Surname	Given Name	
Athletes Men	5				
Athletes Women	5				

DATE	SIGNATURE OF CHIEF OF DELEGATION	RANK / NAME	E - MAIL



# FINAL ENTRY

TO BE RETURNED BEFORE 1 AUGUST 2015



COUNTRY

## 17. SAILING

Function	No.	Rank	Surname	Given Name	Gender (M/W)
<b>Team Captain</b>	1				
<b>Coach</b>	1				
Fleet Race					
Function	No.	Rank	Surname	Given Name	Gender (M/W)
<b>Athletes Mixed</b>	2				
<b>Athletes Women</b>	2				
<b>Reserve Athletes (*)</b>	2				

(\*) 1 athlete for mixed team, 1 female athlete.

Jury Member ISAF- The PCSC will make the necessary contacts and arrangement so that some countries bring the necessary number of Jury Members at their own expense. Type of boat will be notified separately.

DATE	SIGNATURE OF CHIEF OF DELEGATION	RANK / NAME	E - MAIL



# FINAL ENTRY

TO BE RETURNED BEFORE 1 AUGUST 2015



COUNTRY

## 18. SHOOTING

a) Mission (Pistol & Rifle)

Function	No.	Rank	Surname	Given Name	Gender (M/W)
Team Captain, Pistol and Rifle	1				
Coach Pistol Men	1				
Coach Rifle Men	1				
Coach Women	1				
Rifle and Pistol Jury(*)	1				

### PISTOL

Function	No.(**)	Rank	Surname	Given Name
Athletes Men	3	1		
		2		
		3		
Athletes Women	3	4		
		5		
		6		

### RIFLE

Function	No.(**)	Rank	Surname	Given Name
Athletes Men	3	7		
		8		
		9		
Athletes Women	3	10		
		11		
		12		

DATE	SIGNATURE OF CHIEF OF DELEGATION	RANK / NAME	E - MAIL

b) Mission (Shotgun)

Function	No.	Rank	Surname	Given Name	Gender (M/W)
<b>Team Captain, Shotgun</b>	1				
<b>Coach Trap Men</b>	1				
<b>Coach Skeet Men</b>	1				
<b>Coach Shotgun Women</b>	1				
<b>Shotgun Jury(*)</b>	1				
SHOTGUN					
Function	No.(**)	Rank	Surname	Given Name	
<b>Athletes Men (Trap)</b>	3	13			
		14			
		15			
<b>Athletes Men (Skeet)</b>	3	16			
		17			
		18			
<b>Athletes Women (Trap)</b>	3	19			
		20			
		21			
<b>Athletes Women (Skeet)</b>	3	22			
		23			
		24			

DATE	SIGNATURE OF CHIEF OF DELEGATION	RANK / NAME	E - MAIL

c) Declaration of weapons and ammunitions.

	No.(**)	Type of weapon	Manufacturer	Serial Number	Ammunition	
					Caliber	Quantity
P I S T O L	1					
	2					
	3					
	4					
	5					
	6					
R I F L E	7					
	8					
	9					
	10					
	11					
	12					
S H O T G U N	13					
	14					
	15					
	16					
	17					
	18					
	19					
	20					
	21					
	22					
	23					
	24					
R E S E R V E						
<b>Total Ammunition</b>					6mm BR	
					.308WIN	
					.22 LR	
					.32	
					.38	
					.7½~	
					.9½~	

(\* ) The Organizing Committee, with the PCSC Shooting, will determine which countries will bring 1 or 2 referees with ISSF license A or B.

(\*\* ) Corresponding to the sequence of the athlete. Weapons and ammunition must follow the user in the same flight

DATE	SIGNATURE OF CHIEF OF DELEGATION	RANK / NAME	E - MAIL



# FINAL ENTRY

TO BE RETURNED BEFORE 1 AUGUST 2015



COUNTRY

## 19. SWIMMING

a) Mission

Function	No.	Rank	Surname	Given Name	Gender (M/W)
Team Captain	1				
Coach	2				
Medical staff	1				
Athletes Men	6				
Athletes Women	6				

DATE	SIGNATURE OF CHIEF OF DELEGATION	RANK / NAME	E - MAIL



# FINAL ENTRY

TO BE RETURNED BEFORE 1 AUGUST 2015



COUNTRY

b) Swimming Men's Competition

Disciplines		Participants		Best Performance in 2014-2015
		Surname	Given Name	
Freestyle	50m			
	100m			
	200m			
	400m			
	1500m			
Breaststroke	50m			
	100m			
	200m			
Backstroke	50m			
	100m			
	200m			
Butterfly	50m			
	100m			
	200m			
Medley	200m			
	400m			
Relay	4x100m Freestyle			
	4x200m Freestyle			
	4x100m Medley			
Mixed Relay	4x100m Freestyle			
	4x100m Medley			

DATE	SIGNATURE OF CHIEF OF DELEGATION	RANK / NAME	E - MAIL



# FINAL ENTRY

TO BE RETURNED BEFORE 1 AUGUST 2015



COUNTRY

c) Swimming Women's Competition

Disciplines	Participants		Best Performance in 2014-2015
	Surname	Given Name	
<b>Freestyle</b>	50m		
	100m		
	200m		
	400m		
	800m		
<b>Breaststroke</b>	50m		
	100m		
	200m		
<b>Backstroke</b>	50m		
	100m		
	200m		
<b>Butterfly</b>	50m		
	100m		
	200m		
<b>Medley</b>	200m		
<b>Relay</b>	4x100m Freestyle		
	4x100m Medley		
<b>Mixed Relay</b>	4x100m Freestyle		
	4x100m Medley		

DATE	SIGNATURE OF CHIEF OF DELEGATION	RANK / NAME	E - MAIL



# FINAL ENTRY

TO BE RETURNED BEFORE 1 AUGUST 2015



COUNTRY

## 20. TAEKWONDO

Function	No.	Rank	Surname	Given Name	Gender (M/W)
Team Captain	1				
Coach Men	1				
Coach Women	1				
Medical staff	1				
Int'l Referee (WTF)	2(*)				

Function	No.	Rank	Surname	Given Name	Weight
Athletes Men	8				-54kg
					-58kg
					-63kg
					-68kg
					-74kg
					-80kg
					-87kg
					+87kg

Function	No.	Rank	Surname	Given Name	Weight
Athletes Women	8				-46kg
					-49kg
					-53kg
					-57kg
					-62kg
					-67kg
					-73kg
					+73kg

(\*) If a mission brings 1 to 8 athletes, it must bring 1 International Referee.

If a mission brings 9 to 16 athletes, it must bring 2 International Referees

DATE	SIGNATURE OF CHIEF OF DELEGATION	RANK / NAME	E - MAIL



# FINAL ENTRY

TO BE RETURNED BEFORE 1 AUGUST 2015



COUNTRY

## 21. TRACK & FIELD

a) Mission

Function	No.	Rank	Surname	Given Name	Gender (M/W)		
Team Captain	1						
Coach(*)	3						
Medical staff(*)	1						
Athletes(**)	25						
		Disabled Athletes (***)					

(\*) Refer to Handbook II 9.21.3.

(\*\*) The maximum number of participants, excluding the Marathon, is 25 athletes. A maximum of 2 athletes per gender may participate in each Track & Field discipline.

(\*\*\*) There is no limit in the number of participants for disabled athletes. Lines may be added if needed.

DATE	SIGNATURE OF CHIEF OF DELEGATION	RANK / NAME	E - MAIL



# FINAL ENTRY

TO BE RETURNED BEFORE 1 AUGUST 2015



COUNTRY

b) Track & Field Men Competition (Page 1 of 2)

Disciplines	Surname	Given Name	Best Performance in 2014-2015
100m			
200m			
400m			
800m			
1,500m			
5,000m			
10,000m			
110m Hurdles			
400m Hurdles			
3,000m Steeplechase			

DATE	SIGNATURE OF CHIEF OF DELEGATION	RANK / NAME	E - MAIL



# FINAL ENTRY

TO BE RETURNED BEFORE 1 AUGUST 2015



COUNTRY

b) Track & Field Men Competition (Page 2 of 2)

Disciplines	Surname	Given Name	Best Performance in 2014-2015
4x100m Relay			
4x400m Relay			
High Jump			
Long Jump			
Triple Jump			
Pole Vault			
Shot Put			
Discus			
Javelin			
Hammer			

DATE	SIGNATURE OF CHIEF OF DELEGATION	RANK / NAME	E - MAIL



# FINAL ENTRY

TO BE RETURNED BEFORE 1 AUGUST 2015



COUNTRY

c) Track & Field Women Competition (Page 1 of 2)

Disciplines	Surname	Given Name	Best Performance in 2014-2015
100m			
200m			
400m			
800m			
1,500m			
5,000m			
100m Hurdles			
400m Hurdles			
3,000m Steeplechase			

DATE	SIGNATURE OF CHIEF OF DELEGATION	RANK / NAME	E - MAIL



# FINAL ENTRY

TO BE RETURNED BEFORE 1 AUGUST 2015



COUNTRY

c) Track & Field Women Competition (Page 2 of 2)

Disciplines	Surname	Given Name	Best Performance in 2014-2015
4x100m Relay			
4x400m Relay			
High Jump			
Long Jump			
Triple Jump			
Pole Vault			
Shot Put			
Discus			
Javelin			
Hammer			

DATE	SIGNATURE OF CHIEF OF DELEGATION	RANK / NAME	E - MAIL



# FINAL ENTRY

TO BE RETURNED BEFORE 1 AUGUST 2015



COUNTRY

d) Track & Field Disabled Athletes

Disciplines	Surname	Given Name	Classification
100m			
200m			
1,500m			
Shot Put			

DATE	SIGNATURE OF CHIEF OF DELEGATION	RANK / NAME	E - MAIL



# FINAL ENTRY

TO BE RETURNED BEFORE 1 AUGUST 2015



COUNTRY

## 22. TRIATHLON

Function	No.	Rank	Surname	Given Name	Gender (M/W)
Team Captain	1				
Coach	1				
International Referee (ITU)	1				
Medical staff	1				
Function	No.	Rank	Surname	Given Name	
Athletes Men (Elite)	6				
Athletes Women (Elite)	6				
Athletes Men (Senior)	3				
Athletes Women (Senior)	2				

DATE	SIGNATURE OF CHIEF OF DELEGATION	RANK / NAME	E - MAIL



# FINAL ENTRY

TO BE RETURNED BEFORE 1 AUGUST 2015



COUNTRY

## 23. VOLLEYBALL

Function	No.	Team (*)	Rank	Surname	Given Name	Gender (M/W)
Team Captain	1	M				
	1	W				
Coach	1	M				
	1	W				
Assistant Coach	1	M				
	1	W				
Medical staff	1	M				
	1	W				
International Referee (FIVB)	1	M				
	1	W				

Athletes: Men's Team (12)		
Rank	Surname	Given Name

Athletes: Women's Team (12)		
Rank	Surname	Given Name

(\*) Corresponding to men's or women's team, depending on which has qualified to participate

DATE	SIGNATURE OF CHIEF OF DELEGATION	RANK / NAME	E - MAIL



# FINAL ENTRY

TO BE RETURNED BEFORE 1 AUGUST 2015



COUNTRY

## 24. WRESTLING

Function	No.	Rank	Surname	Given Name	Gender (M/W)	
Team Captain	1					
Coach	3					
Medical staff	1					
International Referee (FILA)*	3					
Function	No.	Rank	Surname	Given Name	Weight	
Athletes Men	8				FS	57kg
						61kg
						65kg
						70kg
						74kg
						86kg
						97kg
						125kg
	8				FS	59kg
						66kg
						71kg
						75kg
						80kg
						85kg
						98kg
						130kg

(\*) If a mission brings more than 4 athletes, it must bring 1 International Referee.  
If a mission brings more than 10 athletes, it must bring 1-3 International Referees.

DATE	SIGNATURE OF CHIEF OF DELEGATION	RANK / NAME	E - MAIL





# FINAL ENTRY

TO BE RETURNED BEFORE 1 AUGUST 2015



COUNTRY

## TOP ATHLETES

Rank	Surname	Given Name	Sport	Best Performance(s): Year, competition & record

DATE	SIGNATURE OF CHIEF OF DELEGATION	RANK / NAME	E - MAIL



# FINAL ENTRY

TO BE RETURNED BEFORE 1 AUGUST 2015



COUNTRY

## ANECDOTES OF ATHLETES

Rank	Surname	Given Name	Sport	Special connection*

\* To be used as internal/external PR material for the 6<sup>th</sup> CISM World Games. Examples include 1) Individuals(teams) that have overcome difficulties to participate in the Games, 2) Small missions that wish to introduce themselves to the world, 3) Other athletes(missions) that have some links to Korea.

DATE	SIGNATURE OF CHIEF OF DELEGATION	RANK / NAME	E - MAIL



# FINAL ENTRY

**TO BE RETURNED BEFORE 1 AUGUST 2015**



COUNTRY

## COMMITMENT OF CHIEF OF MISSION

The undersigned, the Chief of Mission \_\_\_\_\_ (Rank/Name) of \_\_\_\_\_ (Nation) declare that he/she has read and understood the CISM Regulations and also the following prescriptions:

1. The mission who comes to the 6th CISM World Games without confirming its participation may be excluded from such Games if their unplanned arrival causes problems to the Host Nation.
2. The mission that does not wear military uniforms during the Opening Ceremony of the Games will not be authorized to take part in the World Games. The Official CISM Representatives (OCR) will communicate this decision.
3. In conformity with the Statutes and traditions of CISM, any political or religious action during a CISM event, in particular the dissemination of propaganda documents, pictures, brochures, reviews, etc, is strictly forbidden. Any contravention shall result in the exclusion of the mission from further competition.
4. The Chief of Mission is reminded that athletes and other team members must comply with CISM Regulations. Instances of indiscipline or poor sportsmanship will be handled by Games officials and may result in the disqualification of individual athletes or teams.

DATE	SIGNATURE OF CHIEF OF MISSION	RANK / NAME	E - MAIL



# FINAL ENTRY

TO BE RETURNED BEFORE 1 AUGUST 2015



COUNTRY

## COMMITMENT OF CHIEF OF DELEGATION

In strict compliance with applicable CISM Regulations (Art. 8.19), the undersigned Chief of Delegation \_\_\_\_\_ (Rank /Name) of \_\_\_\_\_ (Nation), hereby officially confirm that all athletes representing my nation in the CISM event are on active duty in my nation's Armed Forces. I hereby commit to instruct the Chief of Mission representing my country as well as my mission officials, ethics, and spirit as well as the 6th CISM World Games regulations. I understand that sanctions may be imposed against my nation, my mission, my team, individual athletes, or me for violation of this provision (CISM Regulations 8.19) or violation to any CISM rules.

DATE	SIGNATURE OF CHIEF OF DELEGATION	RANK / NAME	E - MAIL



Handbook I

# Administrative Information



MUNGYEONG KOREA 2015  
6<sup>th</sup> CISM World Games

제6회 2015 경북문경 세계군인체육대회 조직위원회  
6<sup>th</sup> CISM WORLD GAMES MUNGYEONG KOREA 2015 ORGANIZING COMMITTEE

# TABLE OF CONTENTS

<b>1. The Host Country</b> .....	69	<b>7. Board and Lodging</b> .....	89
<b>2. The Host Cities</b> .....	74	7.1. Accommodation for 6 <sup>th</sup> MWG Participants.....	89
Gyeongsangbuk-do Province		7.2. Accommodation Categories.....	89
(Mungyeong, Pohang, Andong, Yeongju, Sangju,		7.3. Advanced Arrival in Athletes' Villages.....	90
Yeongcheon, Yecheon)		7.4. Meals and Drinks.....	90
<b>3. General Information</b> .....	80	7.5. Extra Expenses.....	90
3.1. Ranks Military Ranks Of Korea.....	80	<b>8. Transportation</b> .....	90
3.2. References.....	80	<b>9. Opening and Closing Ceremonies</b> .....	91
3.3. Language.....	80	<b>10. Medical Care and Insurances</b> .....	91
3.4. Discrimination.....	81	10.1. Medical Care.....	91
3.5. Reaching Korea.....	81	10.2. Insurance.....	91
3.6. Entry Point.....	81	<b>11. Security</b> .....	92
3.7. Airlines with regular flights to Incheon		11.1. General Aspects.....	92
International Airport.....	81	11.2. Security Measures.....	92
<b>4. 6th Military World Games Organization</b>		<b>12. Entertainment</b> .....	92
<b>Committee / CISM</b> .....	83	12.1. Guided Tours.....	92
4.1. Organization Chart Of SUMOC.....	83	12.2. CISM Meeting Point - CISM Club.....	92
4.2. Organization Chart Of CISM.....	83	12.3. Social Program.....	92
<b>5. Participation</b> .....	84	<b>13. Information Communication</b> .....	93
5.1. Participants.....	84	13.1. Information System.....	93
5.2. Withdrawal of participation.....	85	13.2. Telecommunications.....	93
5.3. Traveling.....	86	<b>14. Press and Media Support</b> .....	93
5.4. Arrivals.....	86	14.1. Press.....	93
5.5. Departures.....	87	14.2. Media Support.....	93
<b>6. Rules of Stay</b> .....	88		
6.1. Program of Stay.....	88		
6.2. Disciplinary Matter.....	88		
6.3. Military Uniform.....	88		
6.4. National Track Suit.....	88		
6.5. Advertisement.....	88		
6.6. Forbidden Actions.....	88		
6.7. Civilian Dress.....	89		
6.8. Crew Members and Drivers.....	89		

# 1. THE HOST COUNTRY : REPUBLIC OF KOREA



The Korean Peninsula is located in North-East Asia. It is bordered by the Amnok River (Yalu River) to the northwest, separating Korea from China, and the Duman River (Tumen River) to the northeast which separates Korea from both China and Russia. The country itself is flanked by the Yellow Sea to its west and the East Sea to the east. There are several notable islands that surround the peninsula including Jeju Island, Ulleungdo and Dokdo.



The Korean peninsula is roughly 1,030km (612 miles) long and 175km (105 miles) wide at its narrowest point. Korea's total land area is 100,033 sq km, and it has a population of 51.18 million people.

Because of its unique geographical location, Korea is placed in a valuable strategic position and is an international hub of Asia. Mountains cover 70% of Korea's landmass, making it one of the most mountainous regions in the world. The lifting and folding of Korea's granite and limestone base create a breathtaking landscape of scenic hills and valleys.

The mountain range that stretches along the length of the east coast falls steeply into the East Sea, while along the southern and western coasts, the mountains descend gradually to the coastal plains that produce the bulk of Korea's agricultural crops, especially rice.



Today, Korea is an industrial nation standing tall on the world stage. Its semiconductor, automobile, shipbuilding, steel making, and IT industries are on the leading edge in global markets. It hosted the 1988 Seoul Olympics and the 2002 FIFA World Cup Korea/Japan.

More recently, Korean TV shows, films, and music are attracting many audiences in Asia and beyond, creating what is being called the "Korean Wave." Korea's new standing in the international community was highlighted in 2010 with the nation becoming the first Asian country to chair the G20 and host the G20 Seoul Summit.



## Climate and Weather

Autumn lasts from September to November, and produces mild weather. It is the best season to visit Korea. Lasting from September through November, the mild days of fall make it the most pleasant time of the year. The temperature varies greatly from day to night. The mountains, blanketed with vivid golden and red autumn leaves under the clear blue sky, are breathtaking.

## Future Policy Directions

In line with its vision of a "Global Korea," the Republic of Korea strives to carry out diplomacy in active cooperation with the international community.

Transcending differences in race, religion and wealth, Korea will foster ties of friendship with all nations and peoples. Respecting the universal values of democracy and the market economy, it will also continue to take part in the efforts by the international community for peace and co-prosperity.

The Republic of Korea will spare no efforts to develop and further strengthen relations with countries of the world not only in bilateral issues but also in the course of addressing common global challenges. While striving to secure a safe and stable supply of resources and energy by promoting the "Low Carbon, Green Growth" policy, Korea will seek to play a significant role in the international efforts to combat climate change.



A woman who volunteered to work as a art teacher shares a joyous moment with her students during a hand printing class.

(KOREA INTERNATIONAL COOPERATION AGENCY)

## Economy

Korea's economy continues to thrive based on a stable political environment.

The economy of Korea is fundamentally a democratic free market economy with a capitalist economic policy. Korea rose from the ruins of the Korean War and underwent a rapid economic growth which was referred to as the Miracle of the Han River. Together with Taiwan, Hong Kong and Singapore, Korea was one of the Four Dragons of Asia that had demonstrated spectacular development during the period. From a nominal per capita gross national income of \$254 in 1970 ranking at 126th, Korea rose to \$22,670 in 2012. The foreign-exchange reserve stands at \$345



billion as of November 2013.

As the 12th largest economy, Korea is represented not only by the Samsung Group but also by numerous conglomerates in various sectors. Hyundai has secured its leading position in shipbuilding since 1983; LG leads in white consumer goods and POSCO is 5th worldwide in steel production. Of the 500 largest companies, Korea is home to 10. Recently, investment and support in future fields such as robotics and clean energy is on the rise.

## Sports Policy

Korea's policy in sports is based on improving public fitness, increasing quality of life, promoting national image and contributing to international relations. Various sports facilities are expanded to encourage public participation in everyday sports.

For structured growth of everyday sports, instructors are in each city, county and district. Facilities for handicapped people have improved and instructors for the disabled are separately allocated to encourage everyone's participation in sports. Furthermore, the establishment of training infrastructure for elite athletes and the expansion of training days for national representatives in sports are implemented to spur growth in sports.

Various efforts are also being made to strengthen the competitiveness of professional sports and the sports industry through investment in sports industry R&D and the modernization of facilities.

The Korea Armed Forces Athletic Corps (KAFAC) is the sole sports division of Korea's armed forces, leading the growth of military sports and national sports development. The Corps takes the initiative in building sports relationships with civilians and is also emphasizing the importance of science based management of athletes.

In the past, Korea has hosted various international events such as the 1988 Seoul Olympics, the 2002 Busan Asian Games, the 2002 FIFA World Cup and the 2003 Daegu Universiade and has made a strong impression worldwide through top level facilities and management capabilities.

< Source : <http://www.korea.net> 「Fact of Korea」 >

## General Statistics of Korea



### General

- **Country Name** : Republic of Korea (South Korea)
- **Capital City** : Seoul (10.2 million)
- **National Flag** : Taegeukgi
- **National Flower** : Mugunghwa (Rose of Sharon)
- **Currency** : Won (US\$1 = 1,127 won) (€= 1,440 won)
- **Language** : Korean (Writing system: Hangeul)

### People

- **Population** : 51.18 million
  - \* Foreign Residents (including short-term visitors) : 1.4 million
  - \* Cities by Population : Seoul (10.2 million), Busan (3.5 million), Incheon (2.8 million), Daegu (2.5 million), Daejeon (1.5 million), Gwangju (1.5 million), Ulsan (1.1 million), **Gyeongsangbuk-do Province (2.7 million)** Mungyeong (76,000), Pohang (524,000), Gimcheon (136,000), Andong (168,000), Yeongju (120,000), Sangju (103,000), Yeongcheon (100,000) Yecheon (46,000)
- **Median Age** : 38.9 years
- **Economically Active Population** : 25.5 million
- **Population Increase Rate** : 0.45%
- **Life Expectancy** : Male(77.7 yrs), Female(84.5 yrs)
- **Religion** : A 2005 census showed that half of the

population practice religion. Among them, 10,726,463 Buddhists, 8,616,438 Protestants, 5,146,147 Catholics comprise the three dominant religions.

### Government

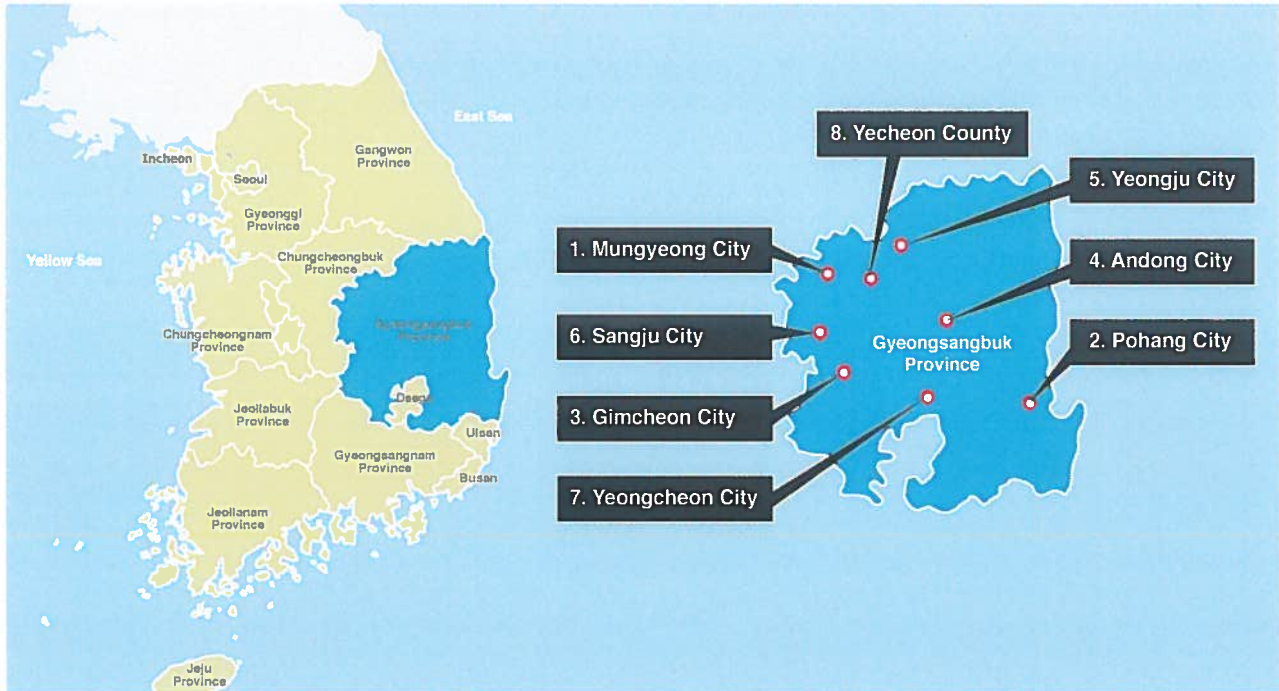
- **Political System** : Republic with a president elected to a single 5-year term by direct popular vote. Division of power among the executive, legislature (unicameral National Assembly), and judiciary branches
- **President** : H.E. Park Geun-hye since 2013
- **Suffrage** : Universal at 19 years of age
- **Elections** : Presidential - every 5 years  
National Assembly - every 4 years  
Local Government - every 4 years

### Economy

- **Gross Domestic Product** : US\$ 1,129 billion
- **Per Capita GNI** : US\$ 22,708
- **GDP Growth Rate** : 2.0%
- **Foreign Exchange Reserves** : US\$ 350 billion
- **Exports** : US\$548 billion
- **Imports** : US\$520 billion
- **Major Industrial Products** : Semiconductors, automobiles, ships, consumer electronics, mobile telecommunications, steel, and chemicals

## 2. HOST CITIES : Gyeongsangbuk-do Province

### Gyeongsangbuk-do Province



Gyeongsangbuk-do Province embraces many different faces of Korean culture, boasting a thousand year of Buddhist heritage of Silla Kingdom and the fascinating culture of the Gaya Kingdom. The province is also the home of the Saemaul civic movement and together with the UN and KOICA, strives to eradicate worldwide poverty through the globalization of the Saemaul movement.

The people of the province, as the successors of the Hwarang and the Seonbi Philosophies, pride in loyalty and justice. Moreover they pride on having been on the forefront industrialization and modernization while possessing a future oriented frontier mindset.

In particular, the province has achieved a new milestone on the cultural history of Korea with the co-hosting of the Gyeongju Culture EXPO with Istanbul, Turkey and through the promotion of Gyeongsangbuk-do province's cultural power with the Korea Silkroad Project.

It is the largest province of Korea with an area that stands at 19,030km<sup>2</sup> (19.1% of Korea), 31 times the size of Seoul. It maintains administrative control of 23 cities and counties (10 cities, 13 counties) and 381 districts, including the Dokdo island. Furthermore, it is the center of world IT and steel industries as well as the hub of human resources and R&D with 38 universities. The province also boasts plentiful cultural heritages (20% of the total number in Korea) and energy generation such as nuclear energy (accounts for 47% of total).

## 1. Mungyeong City

**(Football, Judo, Wrestling, Fencing, Taekwondo, Track & Field, Modern Pentathlon, Cycling, Marathon)**

The city takes its name from the culture of a hill where historically during wartime, it spread the news of victory while at peacetime, it spread various joyous news. The name signifies a region always filled with festivity and joy as people came to hear good news.

Mungyeong is home to the Korea Armed Forces Athletic Corps and its sports complex dedicated to the development of elite national sports. As the main host city of the 6th CISM World Games, the opening and closing ceremonies, 9 disciplines and major final events of the disciplines are scheduled to be held



KAFAC (Korea Armed Forces Athletic Corps)

here. Mungyeong's background as a global sports centric city is built upon hundreds of national level competitions that are being held every year. On a wider scale, Mungyeong has successfully hosted the 2011 Mungyeong World Soft Tennis Championship and the 2014 Gyeongsangbuk-do Provincial Sports Festival.

A diverse range of events such as the Traditional Tea Festival, Apple Festival and Omija Festival highlight the plentiful cultural and historical resources of the region while attracting numerous visitors across the country. In particular, the soft earth roads, clean air and the pleasant sounds of water and birds make for a peaceful and relaxing atmosphere. In 2013, it was ranked first on Korea Tourism Organization's "100 Essential Destinations a Korean should Visit" list.

Major produce of the region include apple, omija (*Schisandra chinensis*), pyogo mushroom, beef and pork. Meanwhile, masters of tea pottery Kim Jeong-ok and Cheon Hanbong and others maintain the national intangible cultural heritage of pottery.

Omija produced in Mungyeong accounts for 45% of the total production in Korea and is registered in the Geographical Indication System. Omija from Mungyeong is a traditional Korean beverage that was served in the royal palace. In recent times, health benefits of the fruit helped its rise in popularity. Alcoholic drinks based on omija was regarded favorably in international summits and conferences. Its reception has paved the way for sales outside of Korea.

## 2. Pohang City (Sailing, Parachuting, Triathlon, Naval Pentathlon)

The first rays of the sun to light the Korean Peninsula falls on Pohang, a city with a long history and celebrated culture, reaching out towards the world. Located in southeast Korea on the coast of the East Sea, both land and sea transportation routes converge on Pohang, making it the gateway of the entire eastern coast where agricultural, industrial, commercial, and fishing products all gather.

The rise of Pohang began with the establishment of POSCO. Pohang is expanding its capacity to reach out into land and sea by constructing the Yeongil Bay Port and the East Coast Highway. As the number one industrial city of Gyeongsangbuk-do Province, Pohang is transforming itself into the center of the entire eastern coast by



Yeongildae Pavilion at sea

life and energy flowing through the Pohang Canal as the starting point, the city is transforming from a bleak grey city into a future oriented eco-friendly green city as well as into one of the four most beautiful port cities. Encompassing 5.93% of the area of Gyeongsangbuk-do Province with a footprint of 1128km<sup>2</sup>, and calling 524,220 residents home, Pohang boasts the largest population in Gyeongsangbuk-do Province.

building up its high-tech, high-value-add industries through utilizing its advanced human and material resources such as POSCO, the Pohang University of Science and Technology, the Research Institute for Industrial Science and Technology (RIST), a biomedical engineering research center, the national nanotechnology integration center, an intelligent robot laboratory, and a miniature motor development support center.

Pohang is also reviving the values of history and nature that were overlooked in favor of industrialization. With

### 3. Gimcheon City (Swimming, Volleyball, Football)



View of Gimcheon

Gimcheon city is the gateway to Yeongnam and a key transport hub. The city historically boasts numerous wise sages and patriots that hail from the place.

Located in the north west of Gyeongsangbuk-do Province, it is between the two major cities (Daegu, Daejeon) of the Gyeongbu line that connects Seoul and Busan. It is also the starting point for the Gyeongbuk -do line heading towards Mungyeong and Yeongju. With the Southern Inland Highway that links Mungyeong -Kimcheon-Geoje, the High Speed Rail that links the east coast and with the Kimcheon-Gumi

KTX station at its center, Kimcheon is a crossroad for transportation and the city will emerge as a logistics focused city.

The Gimcheon Multi Sports Complex is equipped with modern international standard facilities and has successfully hosted the 87th National Sports Festival, the 36th National Youth Sports Festival, the 27th National Disabled Sports Festival and the 38th and 51st Gyeongsangbuk-do Sports Festival. With more than 39 national and international sports events and a hundred teams coming to train as well as various civilian sports events, it is a home to elite sports loved by the citizens. The total area of the city is 1,009.5km<sup>2</sup> which amounts to 5.3% of Gyeongsangbuk-do Province with a population of 135,918.

#### 4. Andong City (Golf, Basketball, Football)

Andong is called the spiritual capital of Korea since it immaculately preserves diverse historical and cultural heritage from each period in time. It is also home to the new provincial government. The Hahoe Village of Andong was listed as a World Heritage Site in 2010 and on the 40th anniversary of the of the declaration of the World Heritage Convention, it was selected as the "Best Model Case." It was selected as one of the 26 model cases among 981 items in 160 countries as having a "living heritage and safeguarding outstanding universal value."

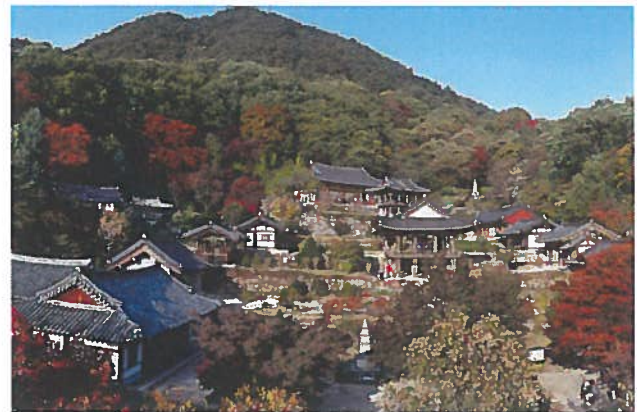


Hahoe Mask (traditional theatre mask) Dance

Every third Friday in September, Andong hosts the "Andong International Mask Dance Festival" for 10 days. The festival is recognized by the Korean government(the Ministry of Culture, Sports and Tourism) to represent the country. In 2013, Mask Dance performance teams from 15 countries participated in the festival and 1 million domestic and international tourists came to Andong for the festival. The area is 1,521.10km<sup>2</sup>, the largest of the cities and the population is 168,302.

#### 5. Yeongju City (Boxing, Orienteering, Football)

Situated in the northernmost region of Gyeongsangbuk-do Province, Yeongju is a urban and agricultural city surrounded like a curtain by the Sobake mountains. To the east lies Bonghwa, Danyang to the west, Andong and Yechon to the south and Gangwon to the north. Being in the center of the Central Highway, Yeongju is the heart of cultural tourism of the Baekdu mountain range.



Buseok Temple

One of the most notable cultural heritages of Yeongju is the Buseok Temple built during the Silla dynasty (676 AD) and the first Confucian Academy established by

the king, the Sosu Academy (1543). The region is littered with numerous charming and noble heritages.

Furthermore, the Seonbi (Confucian literati) Cultural Festival held every year on May allows participants to experience the spiritual as well as traditional culture of Korea. Poongi Ginseng Festival held every October is another event that draws a large number of visitors to Yeongju.

The area of the city is 668.9km<sup>2</sup> which amounts to 3.5% of the Gyeongsanbuk-do Province and the population is 113,309. The climate varies from season to season with the average temperature in January being between -5°C and 1°C while in August, the average temperature is 24°C. The average yearly rainfall is 1,283.8mm.

## 6. Sangju City (Handball, Football)



Sangju Gotgam (dried persimmon)

Sangju is a mixed urban-agricultural city located in the northwestern inland area of Gyeongsangbuk -do Province, near to the main Host City of Mungyeong. Sangju is a key transportation hub with all of Korea able to be reached within 2 hours due to the Central Highway, Sangju-Cheongwon Highway, Sangju-Yeongdeok Highway, and the Sangju-Yeongcheon Highways. As the historic town of Seonbi (Confucian literati), Sangju sees to its East the Nakdong River and to its West the Baekdu Mountain Range, endowing Sangju with stunning scenery and abundant

agricultural resources, notably rice, silkworms, and dried persimmons.

Sangju also boasts the largest Korean medicine industrial complex, and is the number one bicycle city of Korea with an average of two bicycles per household and bicycles accounting for 21% of all transportation. From 2011, it is the home to the Sangju Sangmu Football Club who have achieved a record of 11 continuous victories during the 2013 season, contributing to their promotion to the first division of K-League. With an area of 1255km<sup>2</sup>, Sangju accounts for 6.6% of the area of Gyeongsangbuk-do Province, and is the 6th largest municipality in Korea. Home to 103,346 residents, blessed with the vitality of nature and as the capital of Korean agricultural industry, Sangju is the number one hotspot for the return-to-the-land movement.

## 7. Yeongcheon City (Military Pentathlon)



Ancient Imgo Seowon (Confucian Academy)

Home to numerous cultural sites coexisting with the beautiful nature, Yeongcheon is renowned for its clean environment. In particular, it is the heart of eco-friendly agriculture with peaches, plums, garlic apple and other produce cultivated from clean regions. Based on products tailored to Yeongcheon, the agricultural industry has burgeoned to a 1 billion USD industry.

Equestrian industry mixes leisure and culture through initiatives such as special industrial regions and new racecourses. The aerospace industry, festival of stars at Bohyeon Mt. Observatory, Imgo College, the

festival of traditional medicine and the modernization of traditional dyes are becoming the new driving forces for development.

As a sports city, the facilities such as the Yeongcheon Comprehensive Sports Center(Pool), Yeongcheon Stadium, Yeongcheon Gym, archery field, tennis field and taekwondo stadium are concentrated in one area, making it popular

for the general public.

With a population of 100,565, the city is rising as a leisure and tourist city coupled with high-tech industry. The aerospace industry and the equestrian sector constitutes the base for the future of Yeonghcheon.

## 8. Yecheon County (Archery, Aeronautical Pentathlon)

Yecheon County, boasting 1,300 years of history and innumerable cultural relics, is located in northern Gyeongsangbuk-do Province on the base of the Sobaek Mountains, with an ideal geography of mountains to the back, water to the front.

In particular, Yecheon with its clean air and rich soil is renowned for high-quality agricultural produce such as apples, rice, sesame oil, beef, and chili peppers. Famous sites include the Samgang Tavern, Hoeryong Island, Seoksong pine tree, Yecheon hot springs, and the Insect World, popular for children.



Yecheon Jinho International Archery Range

The Yecheon Jinho International Archery Range, located in Cheongbu Township, was named and built in Yecheon in honor of the legendary archer KIM Jinho, who at the 1979 30th International Archery Championship in Berlin swept all the distances and the individual as well as team titles to win five gold medals and shocked the entire world of archery. Built at the current location in 1995, the Jinho International Archery Range boasts a regal size and splendid scenery, and is often considered to be the most beautiful archery range in the world. It is popular as the site of national archery competitions and training site for Korean and foreign archers. Since 2005, a free archery program has been operating to promote the image of Yecheon as the home of archery as well as to expand the archery base, reaching 10,000 people each year. The land of hopes and dreams of Yecheon has an area of 661,158km<sup>2</sup> and a population of 46,425.

## 3. GENERAL INFORMATION

### 3.1. MILITARY RANKS OF KOREA

\*( ): Abbreviation

OFFICERS				
NATO	ARMY	AIR FORCE	MARINE CORPS	NAVY
OF-9	General (GEN)	General (Gen)	General (Gen)	Admiral (ADM)
OF-8	Lieutenant General (LTG)	Lieutenant General (Lt Gen)	Lieutenant General (LtGen)	Vice Admiral (VADM)
OF-7	Major General (MG)	Major General (Maj Gen)	Major General (MajGen)	Rear Admiral Upper Half RADM(U)
OF-6	Brigadier General (BG)	Brigadier General (Brig Gen)	Brigadier General (BrigGen)	Rear Admiral Lower Half RADM (L)
OF-5	Colonel (COL)	Colonel (Col)	Colonel (Col)	Captain (CAPT)
OF-4	Lieutenant Colonel (LTC)	Lieutenant Colonel (Lt Col)	Lieutenant Colonel (Lt Col)	Commander (CDR)
OF-3	Major (MAJ)	Major (Maj)	Major (Maj)	Lieutenant Commander (LCDR)
OF-2	Captain (CPT)	Captain (Capt)	Captain (Capt)	Lieutenant (LT)
OF-1	First Lieutenant (LT)	First Lieutenant (1st Lt)	First Lieutenant (1st Lt)	Lieutenant Junior Grade (LTJG)
	Second Lieutenant (2LT)	Second Lieutenant (2nd Lt)	Second Lieutenant (2nd Lt)	Ensign (ENS)
ENLISTED, NON-COMMISSIONED OFFICER, WARRANT OFFICER RANKS				
OR-9	Warrant Officer			
OR-8	Sergeant Major	Chief Master Sergeant	Sergeant Major	Master Chief Petty Officer
OR-7	Master Sergeant	Senior Master Sergeant	Master Sergeant	Senior Chief Petty Officer
OR-6	Sergeant First Class	Master Sergeant	Gunnery Sergeant	Chief Petty Officer
OR-5	Staff Sergeant	Technical Sergeant	Staff Sergeant	Petty Officer First Class
OR-4	Sergeant	Staff Sergeant	Sergeant	Petty Officer Second Class
OR-4	Corporal	Senior Airman	Corporal	Petty Officer Third Class
OR-3	Private First Class	Airman First Class	Lance Corporal	Seaman
OR-2	Private	Airman	Private First Class	Seaman Apprentice

### 3.2. REFERENCES

The organization of the 6th WG is governed by the CISM Statutes, the CISM Regulations, the Regulations of the 6th WG, the CISM Sport Regulations and the Games Contract of Organization.

### 3.3. LANGUAGE

All official documents concerning the 6th WG will be made in English. Words in the masculine gender shall also include feminine. Words of the plural number shall include the singular and vice-versa.

### 3.4. DISCRIMINATION

Given the nature and aims of CISM, absolutely no discrimination of any kind is allowed against any country or person on grounds of ethnicity, religion, political affiliation or gender.

### 3.5. REACHING KOREA

Korea can be reached either by air or sea. However due to the travel times involved, travel by air is recommended.

### 3.6. ENTRY POINT

All participants arriving at Korea will be welcomed by SUMOC at the official entry point, Incheon International Airport (ICN), and transported to the accommodations.

SUMOC will NOT provide transportation from any other points of arrival.

Participants arriving at other airports on military aircraft must inform SUMOC and receive prior authorization.

#### Incheon International Airport (ICN/RKSI)

\* Address: 424-47, Gonghang-gil, Jung-gu, Incheon 400-700, Republic of Korea

\* Tel: +82 (32) 1577-2600

### 3.7. AIRLINES WITH REGULAR FLIGHTS TO INCHEON INTERNATIONAL AIRPORT

Airline	IATA	Major Destinations	Contact(+82 2)
Aeroflot	SU	Moscow-Sheremetyevo	744 8672
Air Astana	KC	Almaty	743 2620
Air Bishkek	KR	Bishkek	-
Air Canada	AC	Vancouver, Toronto	744 0898
Air China	CA	Beijing-Capital, Hangzhou	744 3255
Air France	AF	Paris-Charles de Gaulle	744 4900
Air India	AI	Delhi, Hong Kong	743 0321
Air Macau	NX	Macau	743 8999
AirAsia Japan	NQ	Tokyo-Narita	743 4333
AirAsia Zest	Z2	Cebu, Kalibo, Manila	743 8031
AirAsiaX	D7	Kuala Lumpur	743 4333
Aircalin	SB	Noumea	743 5396
All Nippon Airlines	NH	Fukuoka	744 3200
American Airlines	AA	Dallas/Fort Worth	743 7260
Asiana	OZ	Chicago, Frankfurt, Hong Kong	744 2135
British Airways	BA	London-Heathrow	743 5703
Business Air	8B	Bangkok-Suvarnabhumi	743 1901
Cathay Pacific	CX	Hong Kong, Taipei	744 6775
Cebu Pacific	5J	Cebu, Kalibo, Manila	743 5705
China Airlines	CI	Taipei-Taoyuan	743 1513
China Eastern Airlines	MU	Qingdao, Shanghai-Pudong	744 3780

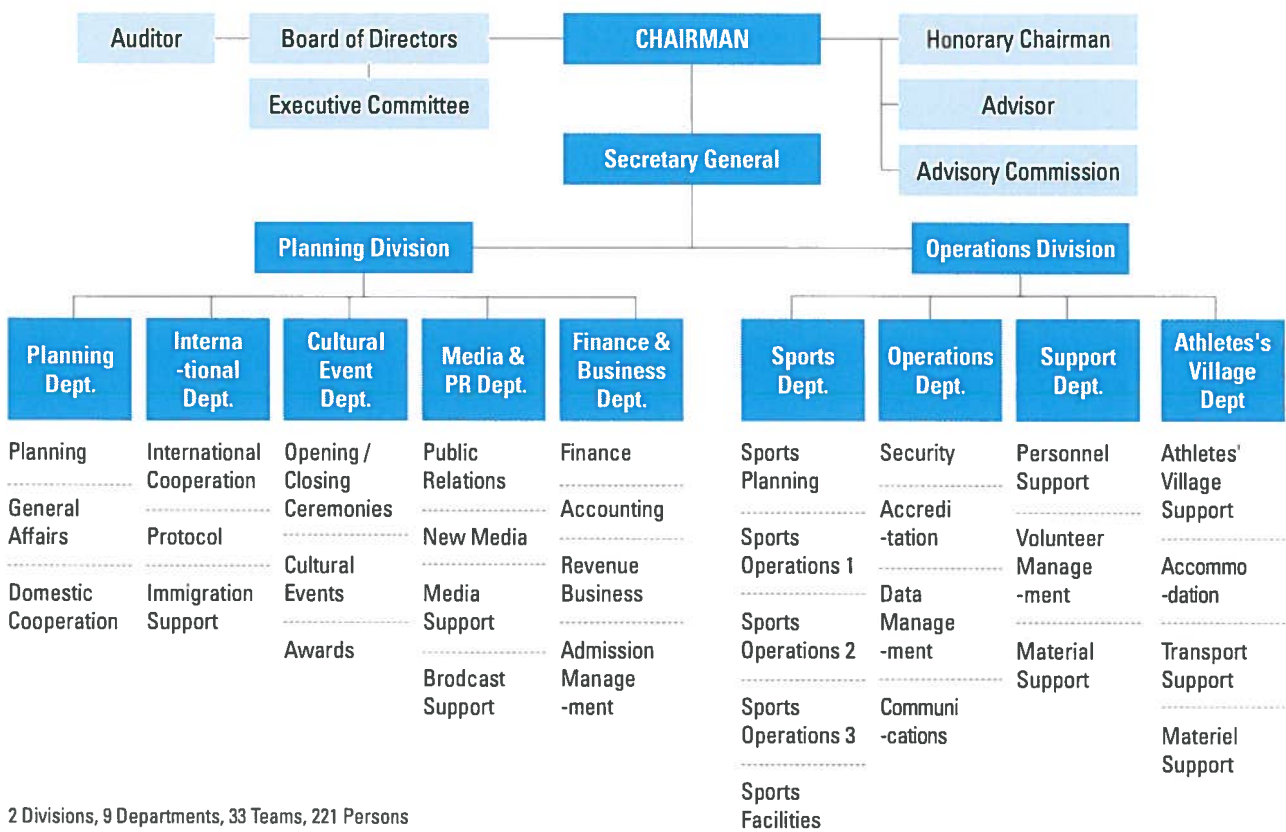
Airline	IATA	Major Destinations	Contact(+82 2)
China Southern Airlines	CZ	Beijing-Capital, Gunangzhou	744 3455
Czech Airlines	OK	Prague	
Delta Air Lines	DL	Detroit, Seattle-Tacoma	744 6307
Dynamic Airways	D2	Saipan	
Eastar Jet	ZE	Bangkok, Fukuoka, Jinan	
Emirates	EK	Dubai	743 8101
Ethiopian Airlines	ET	Addis Ababa, Hong Kong	-
Etihad Airways	EY	Abu Dhabi	743 8760
Eva Air	BR	Kaohsiung, Taipei-Taoyuan	744 3512
Finnair	AY	Helsinki	743 5698
Garuda Indonesia	GA	Denpasar-Bali, Jakarta	744 1991
Hawaiian Airlines	HA	Honolulu	743 7481
Japan Airlines	JL	Tokyo-Narita	744 3601
Jeju Air	7C	Cebu, Guam, Phnom Penh	743 2932
Jin Air	LJ	Chiang Mai, Guam, Macau	743 1504
KLM	KL	Amsterdam	744 6700
Korean Air	KE	Los Angeles, Nairobi, Prague	742 7654
Lao Airlines	QV	Vientiane	743 5396
Lufthansa	LH	Frankfurt, Munich	
Malaysia Airlines	MH	Kuala Lumpur	744 3501
Mandarin Airlines	AE	Kaohsiung	743 1513
Mega Maldives	5M	Male	-
MIAT Mongolian Airlines	OM	Ulaanbaatar	744 6800
P.C. Air	GT		743 2790
Peach	MM	Osaka-Kansai	743 5699
Philippine Airlines	PR	Cebu, Kalibo, Manila	744 3720
Qatar Airways	QR	Doha	744 3370
SAT Airlines	HZ	Yuzhno-Sakhalinsk	741 6035
Scoot	TZ	Singapore, Taipei-Touyuan	743 2537
Shandong Airlines	SC	Jinan, Qingdao, Yantai	744 3255
Shanghai Airlines	FM	Shanghai-Pudong	744 3780
Shenzhen Airlines	ZH	Shenzhen	744 3255
Sichuan Airlines	SU	Chengdu	743 5211
Singapore Airlines	SQ	San Francisco, Singapore	744 6500
Sky Wings Asia Airlines	ZA	Siem Reap	-
Thai Airways International	TG	Bangkok, Los Angeles	744 3571
Tianjin Airlines	GS	Tianjin	-
Turkish Airlines	TK	Istanbul	744 3737
T'way Airlines	TW	Fukuoka, Sapporo	6250 5915
U Airlines	YL	Bangkok	-
Uni Air	B7		744 3512
United Airlines	UA	San Francisco	744 6666
Uzbekistan Airways	HY	Tashkent	744 3700
VietJet Air	VJ	Hanoi	-
Vietnam Airlines	VN	Da Nang, Hanoi, Ho Chi Minh	744 6565
Vladivostok Air	XF	Khabarovsk, Vladivostok	744 8672
Xiamen Air	MF	Fuzhou, Xiamen	-

# 4. 6th CISM WG ORGANIZING COMMITTEE / CISM

## 4.1. ORGANIZATION CHART OF SUMOC

The organization responsible for the conduct of the Games and representing Korea in all matters related to the Games is the 6th CISM World Games Mungyeong Korea 2015 Organizing Committee (hereafter 'SUMOC').

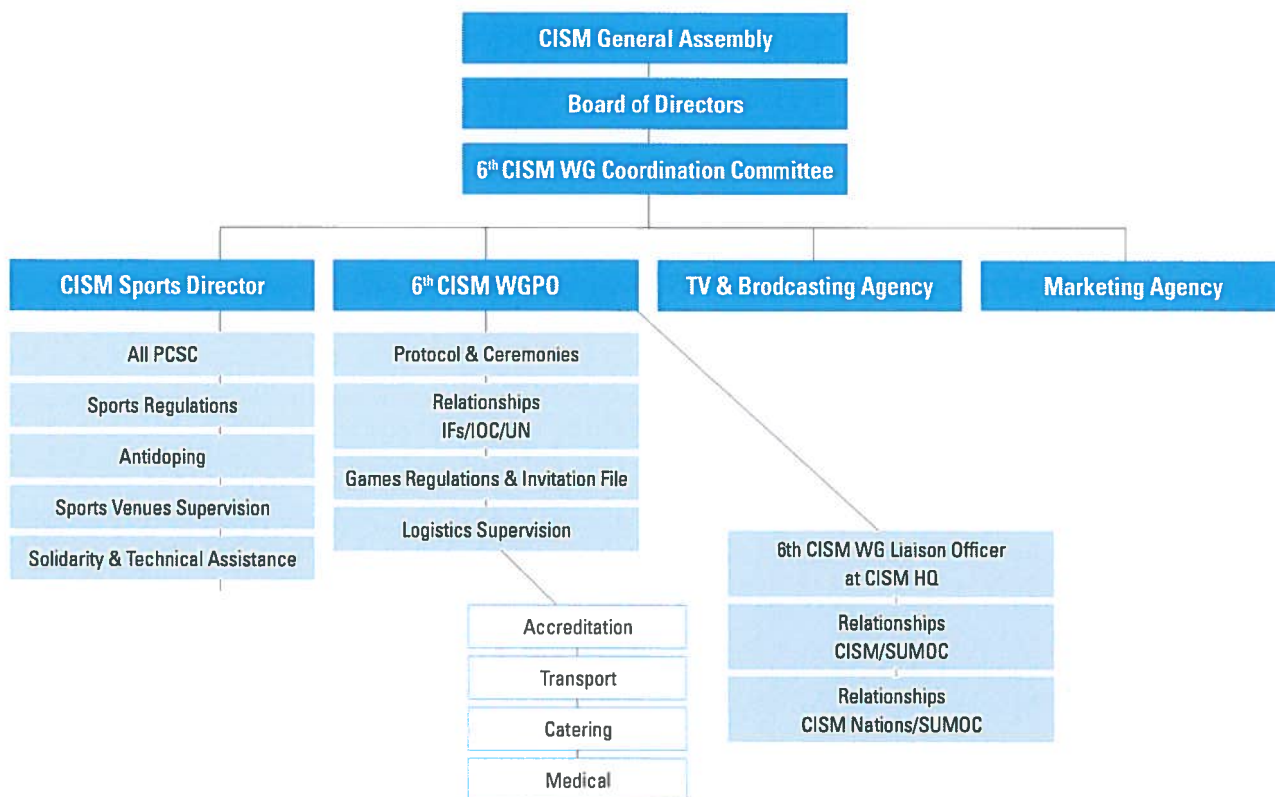
SUMOC is led by Chairman KIM Sang-ki, a former Army Chief of Staff and retired General. It is composed of 2 divisions, 9 departments, 33 teams, and ca. 220 personnel, with the following structure:



2 Divisions, 9 Departments, 33 Teams, 221 Persons

\*Joint civilian, government and military personnel

## 4.2. ORGANIZATION CHART OF CISM



## 5. PARTICIPATION

### 5.1. PARTICIPANTS

#### 5.1.1. Military Status

Only personnel in active duty as defined in the CISM Regulations Art. 7.21 of active CISM nations may take part in the 6<sup>th</sup> WG competitions as athletes. All military participants must hold the official military ID card from their respective Armed Forces or a form of verification (in English or French) of military status with passport. Any athlete who fails to present such a military ID card or form will not be authorized to take part at the 6<sup>th</sup> CISM World Games.

By signing the Final Entry, the Chief of Delegation confirms the active military status of the participating athletes.

#### 5.1.2. Composition of the Mission

Teams sent by their nations to participate in the Games are called “Missions.” The composition of a mission per sport is given in “Handbook II - Sports Information” Delegations are required to strictly respect the standard composition of a participating mission. No additional member may be included in the mission without special authorization from the Host Nation. SUMOC has no financial or organizational obligations towards people who are not included in the mission (relatives, spectators, etc).

In terms of age, persons less than 17 years of age cannot participate in CISM events under any circumstances.

### 5.1.3. Mission Officials

The main actors of a World Games are the athletes. In order to avoid missions with more officials than athletes, the proportion below must be respected by the participants.

ATHLETES	OFFICIALS (MAXIMUM)
1~3	2
4~6	3
7~8	4
9~10	5
11~20	6
21~30	11
31~40	13
41~50	17
51~60	21
61~70	25
71~80	29
81~90	33
91~100	37
101~200	41
201+	1 per 5 athletes

Note: any exception must be discussed and authorized by SUMOC

#### 5.1.3.1. Chief of Mission

The countries shall designate a Chief of Mission (preferably the Chief of Delegation) who shall be entitled to represent his/her Country. In case the Chief of Delegation attends the 6th WG, he must automatically be the Chief of Mission. No exceptions will be authorized.

#### 5.1.3.2. Deputy Chief of Mission

When the size of the Mission exceeds 30 individuals, every country can designate a deputy Chief of Mission according to the following table:

Mission Size	CoM	Deputy CoM
1~30	1	0
31~60	1	1
61~90	1	2

91~120	1	3
121~150	1	4
150+	1	5

#### 5.1.3.3. Referees and Judges

Any mission must bring at their own costs the necessary referees and judges. In case a mission cannot bring with their mission the necessary referees and judges, a written request must be sent to the organizer along with the 2nd Preliminary Agreement of participation.

SUMOC kindly requests the referees/judges to bring their current standard uniform (if any) received from the correspondent International Federation in order to standardize the uniforms and also to wear the official ones determined by the IF.

For some sports, SUMOC, together with the PCSC, will determine which countries are requested to bring one or two Jury members.

#### 5.1.3.4. Sports Officials

For Team Captains, trainers/coaches, medical staff, etc., it is possible to find all the details in the "Handbook II - Sports Information."

#### 5.1.3.5. Other People

All other people, such as spectators, relatives, friends, etc. are welcome to the Games and can obtain entrance ticket to the ceremonies and to the sports events. They must organize their own board, lodging, and local transportation. CISM and SUMOC do not have obligations toward these people.

## 5.2. WITHDRAWAL OF PARTICIPATION

Any nation that withdraws participation in the 6th WG, after having sent a final entry form, is requested to notify SUMOC at least one month before (2 September 2015) the opening of the Games (with copy to the SG). An amount fixed by the BoD will anyway be charged for administrative costs. Every nation not informing the

Organizing Committee of its withdrawal will also be obliged to pay administrative costs.

### **5.2.1. Withdrawal of the whole Mission**

Such nation would have to pay a penalty charge to be fixed by the BoD at its 2015-1 meeting. Any nation not informing SUMOC of its withdrawal, in addition to the above administrative cost, will also have to pay another penalty charge to be determined by the BoD at its 2015-1 meeting. In this case, the debts will be added to the amount of the withdrawn country's CISM annual membership fee.

### **5.2.2. Withdrawal of a part of the Mission**

If a mission does not bring an athlete or team (teams sports) previously enrolled in the final entry, they will have to pay a penalty charge per capita to be fixed by the 2015-1 BoD meeting. Any payment shall be made to SUMOC upon arrival and registration in Korea. Any Mission refusing to pay the penalty charge will be refused participation in all events.

### **5.2.3. Late withdrawal of teams officially registered for team sport competition**

Football, Basketball, Handball and Volleyball are team sports program at the 6th MWG. Organizing team competition does not allow much flexibility. Any late withdrawal of one team shall negatively impact the whole schedule of competitors and will be harmful for all. In this sense, any mission withdrawing from a team sport competition after sending the second preliminary agreement will have to pay USD 10,000 penalty to SUMOC. The number of teams in each competition and the continental representation will be determined by SUMOC, the CISM CC in consultation with the respective PCSC and the continental president. Corresponding drawing of lots will be organized after March 31st, 2015.

## **5.3. TRAVELLING**

As a general rule, traveling expenses of participating authorities and missions to the site of the 6th WG are borne by the delegations they belong to. Local transportation will be organized by the SUMOC.

## **5.4. ARRIVALS**

### **5.4.1. General**

As a general rule, missions are required to strictly comply with the scheduled arrival dates fixed in the General Schedule of Events of the "Handbook II - Sports Information".

If your mission is arriving split into various groups, please specify the different flights.

### **5.4.2. Passport/Visa, Customs and Vaccination**

All participants have to ensure that all their travel documents are up to date for entry into Korea such as passport and visa (if required). As visa service upon arrival is not available, measures must be taken accordingly.

For detailed information and requirements, please inquire the Korean embassy or a consulate serving your country.

Please also refer to the Republic of Korea Ministry of Foreign Affairs website:

<https://www.mofa.go.kr>

Enclosed in the Invitation you can find forms to facilitate the entry of weapons, ammunition, and drugs. Please correctly fill in the forms in order to avoid any inconvenience upon arrival.

### **5.4.3. Early Arrival of an Expected Mission**

In principle, SUMOC will not accept Missions arriving before the scheduled dates. In all cases, missions arriving early must pay the extra accommodation costs

to SUMOC upon their arrival. In case the mission is not able to pay these accommodation costs, the mission will not be allowed to participate in the Games. For any doubt and/or clarification, please contact SUMOC. SUMOC has no obligation concerning training and transport. Expenses for these are due to the missions.

#### **5.4.4. Late Arrival of an Expected Mission**

##### **a) Before the Preliminary Meeting**

Expected missions will have normal participation.

##### **b) After the Preliminary Meeting (drawing of lots)**

Before the start of the competitions the expected missions will have normal participation. During the preliminary meeting, the athletes and teams are placed by drawing of lots following the same procedure as the present missions.

After the start of the competitions, the expected missions will be allowed to compete following the planned program. On no account shall the events in progress or those already completed be repeated.

The drawing of lots for the events will not be repeated. The teams and individuals of the late missions are placed, at the convenience of the Technical Jury, in those positions which will not affect the drawing of lots.

- Teams: all matches or events not played are to be forfeited.
- Individuals: all events not participated in are lost.

#### **5.4.5. Arrival of an Unexpected Mission**

SUMOC will not accept participation of unexpected missions. Missions that have not submitted the Final Agreement before the deadline must inquire SUMOC for participation.

If SUMOC authorizes the participation and the mission arrives after the Preliminary Meetings, on no account should the events in progress or those already completed be repeated.

#### **5.4.6. Late Replacement of Mission Member**

Missions must notify SUMOC of any changes to the composition of the Mission (officials or athletes) after sending the Final Agreement. The enclosed Late Replacement Form (LRF) must be used. If the mission does not inform the changes before arriving in Korea, SUMOC may refuse the participation of the replacement as well as charge the penalty stated in item 5.2.2 of this Handbook I.

### **5.5. DEPARTURES**

#### **5.5.1. General**

As a general rule, missions are required to strictly comply with the scheduled departure dates fixed in the General Schedule of Events of the "Handbook II - Sports Information." If a mission is departing in separate groups, all the separate flights must be specified.

#### **5.5.2. Early Departure**

No sanctions will be applicable if an athlete or mission leaves the Games with the approval of CISM because of absolute necessity or in case of emergency (e.g. injuries, flight connection problems, death of a family member, etc.).

#### **5.5.3. Late Departure**

In all cases, missions leaving after the fixed date must pay extra accommodation costs. For any doubt and/or clarification, please contact SUMOC.

## 6. RULES OF STAY

### 6.1. PROGRAM OF STAY

Upon arrival in Korea, the participants will receive an Information Package containing the complete program of stay. The following information will be particularly detailed:

- General calendar & detailed schedule of all competitions
- Place and date of the opening and closing ceremonies
- Places and dates of the various meetings
- Places and dates of official receptions
- Dress code
- Security
- Maps of key areas
- Addresses and telephone numbers of the embassies, military attachés, etc.
- Terrain description for some of the events (nature, vegetation, profile, etc) for amphibious cross-country, sailing etc.
- Information and tourist guides of the cities and surroundings
- Program for spouses (there may be some fees for certain activities)

### 6.2. DISCIPLINARY MATTERS

The Chiefs of Missions are responsible for the behaviour of their mission. The missions fall under the jurisdiction of the Host Nation. During the Games, all athletes present on the playing fields are equal before the juries, the referees and themselves. No one may use his rank to impose his views on sports matters.

Civilian members of the missions must conform to the disciplinary rules accepted by all other participants

### 6.3. MILITARY UNIFORMS

CISM Authorities (BoD, CoD, CoM) should wear

jacket and tie uniform for the official ceremonies. All other participants must wear their national service dress uniform during official ceremonies such as the Opening and Closing Ceremony of the Games. Individuals without proper uniforms will not be allowed to participate in the Games.

The presentation of medals can be done in sports uniforms, if for organizational reasons it is not possible to wear military uniform (for example, when the presentation immediately follows a competition event). But whenever possible, the medal ceremony will be done in uniform to enhance the military character of the Games.

### 6.4. NATIONAL TRACK SUIT

It is mandatory that competitors have at least one official track-suit (training) and official jersey/polo, preferable in the national colors with the name of the country, official shorts, socks and sport-shoes. Caps are not mandatory.

### 6.5. ADVERTISEMENT

All advertisement during the sports competitions and medal awarding at the competition areas and in the accommodation sites has to be in accordance with the regulations of the relevant International Federation and CISM rules.

All types of advertisement which goes against ethics, or the spirit of sport and CISM are strictly forbidden. Any infringement to this rule shall automatically result in immediate disqualification of the athlete/team. As a general rule in CISM, any advertisement of tobacco, weapons and/or alcohol is strictly forbidden.

### 6.6. FORBIDDEN ACTIONS

In conformity with the statutes and traditions of CISM,

any political or religious action during the Games (in particular the dissemination of propaganda documents, pictures, brochures, reviews, etc.) is strictly forbidden. Any contravention shall result in the exclusion of the mission from further competition and the case shall be referred to the CISM Discipline Commission.

## 6.7. CIVILIAN DRESS

Civilian dress may be worn on excursions organized by SUMOC and inside the Athletes' Villages.

## 6.8. CREW MEMBERS AND DRIVERS

Aircraft crew members and drivers will be granted free entry to all events.

# 7. BOARD AND LODGING

## 7.1. ACCOMMODATION FOR 6TH MWG PARTICIPANTS

SUMOC has planned to accommodate around 6,000 athletes, 1,600 officials, 100 authorities (VVIP, and CISM VIPs), plus 700 media personnel, totaling 8,400 people.

## 7.2. ACCOMMODATION CATEGORIES

The following categories are considered:

Category	Authorities/Participants	Accommodation and costs
VVIP	Head of State, Prime Minister, Ministers, Chief of Staff, 3 star or above General, CISM President, IOC President or President's Representative, UN Representative	The people in this category will be accommodated in a 5 star hotel at their own expense, except the CISM President.
CISM VIP(a)	Secretary General, CISM Vice President, Members of the Board of Directors, CISM Commission Presidents, Treasurer General, General Secretariat Department Director, 6th WG Project Officer	The people in this category will be accommodated in a designated hotel at SUMOC's expense.
CISM VIP(b)	Former CISM Presidents and Secretary General, Guests of CISM and SUMOC, CISM sponsors and partners, Chiefs of Delegations (if not Chief of Mission)	The people in this category will be accommodated in a designated hotel at their own expense.
1	Chiefs of Missions, Deputy CoM, PCSCs, Chiefs of Liaison Offices, Other members of the CISM General Secretariat, Members of the CISM Sports Commission, Chief Referees and/or Technical Delegates from the International Federation, CSC Members, International referees	The people in this category will be accommodated in the Athletes' Villages or designated hotel/ accommodation, free of charge, preferably in a single room.
2	Team Captain, trainer/coach, medical staff, mechanics/ helpers/ad-libitum, etc., Male athletes, Female athletes, Press team (maximum 3 people per country)	The people in this category will be accommodated in the Athletes' Villages. * Up to 30 per delegation: SUMOC expense * 31-100 per delegation: € 30 per day * 101 or more: € 80 per day
3	Relatives, Supporters	SUMOC has no obligation towards this category of people. However, it can assist these people to find accommodation.

### 7.3. ADVANCED ARRIVAL IN ATHLETES' VILLAGES

In order to facilitate the arrival of missions in the Athletes' Villages, SUMOC requests the missions to send up to 3 members (1 per Athletes' Village) in advance (from September 29th 2015 onwards) to Mungyeong so that they can receive the keys and check the rooms, distribute the people, check accreditation, etc. Those members must be part of the missions registered in the Final Entry.

Also members of the GS and the PCSCs are welcome to this early arrival to provide support for SUMOC.

### 7.4. MEALS AND DRINKS

Meals and drinks will both be sensible and substantial and will meet the requirement of sport dietetics. As much as possible, the following points will be taken into consideration:

- Traditions particular to race and religion
- Medical requirements and prescriptions
- SUMOC will provide free of charge non-alcoholic drinks during meals and water during the competitions

### 7.5. EXTRA EXPENSES

Extra expenses including telephone, laundry and drinks must be paid by the consumers.

Any cost before the designated arrival date and/or the departure date, must be covered by the participants.

## 8. TRANSPORTATION

SUMOC will prepare a transportation plan for the 6th MWG period taking into consideration the following:

a) Individual cars and VIP Vans (according to specific situations or security reasons) with drivers and guides to be used in officials events only for each of the following number of authorities:

- CISM President
- CISM Vice Presidents
- CISM Secretary General
- Official CISM Representatives (OCR)
- Games Project Officer
- Presidents of CISM Sports Committees
- CISM Communication Department personnel

- CISM Department Directors
- The Chiefs of Missions

b) Shuttle service for participants:

- From the airport (ICN) to the accommodation site(s) and vice-versa.
- From the accommodation site(s) to the sports venues and vice-versa.
- From the accommodation site(s) to some tourist points and malls on regular time and vice-versa.

c) In addition, there will be dedicated transport for teams to the respective competition venues for competition and training according to the schedule of the events.

## 9. OPENING AND CLOSING CEREMONY

For the Opening and Closing Ceremonies, the missions in their national military uniforms, led by their chiefs of mission, enter the stadium and assemble according to French alphabetical order. The team of the host nation is the last to enter the stadium. Those who do not have proper military uniform will not be allowed to participate in the stadium march in.

The ceremony shall be comprised of the pre-ceremony, the ceremony proper, and the post-ceremony. During the pre- and post-ceremony, various performances shall take place including the traditional culture of the host country, and during the ceremony proper, the pledge of allegiance of the Host Nation, hoisting of the CISM flag and playing of the CISM anthem, speeches

by VIPs and other authorities, the athlete's oath, and the lighting of the flame shall take place.

In addition during the official Closing Ceremony, the handing over of the Games flag and flame to the next host, as well as cultural performance of the next host take place. The Games are closed with the extinguishing of the flame.

The site of the opening and closing ceremonies shall be the Main Stadium of the Korea Armed Forces Athletic Corps (KAFAC) in Mungyeong. All athletes can participate in the ceremonies using a shuttle bus that will be provided.

During the Games period, the various missions shall exchange gifts through gift exchange ceremonies.

## 10. MEDICAL CARE AND INSURANCE

### 10.1. MEDICAL CARE

Medical centers at the competition venues and Athletes' Villages will be established to deal with first aid and emergency evacuation. Serious cases will be treated at a full serviced designated hospital.

The responsible physician at the medical center will determine the level of medical treatment that is required. SUMOC will bear all expenses at the medical centers and at competition venues. All other expenses, such as treatment in designated hospitals, hospitalizations, surgical operations, special treatment, and repatriation in case of disease by illness or accident, other expenses on account of illness/accident such as compensation, loss of income or non-emergency care will be charged to the users themselves.

If for any reason the injured athlete or his delegation refuses the medical arrangements proposed by

SUMOC, the costs of hospitalization or treatment at another facility will be the responsibility of the delegation under any circumstance.

If the mission brings any drugs to treat the team and its staff, they must be declared in advance through the attached 'Declaration of Drugs' form signed by the responsible doctor. SUMOC is not responsible for effects to health, damage to individual or collective health and the environment arising from the change of the purpose of the above mentioned drugs which were signed by the participating nation's doctor.

### 10.2. INSURANCE

The missions must have the appropriate insurance to cover travel, accidents and health risks as they are not under the responsibility of SUMOC nor CISM. SUMOC and CISM are not responsible for compensations for accidents that are not covered by insurance.

## 11. SECURITY

### 11.1. GENERAL ASPECTS

SUMOC, through its security department, is responsible for the security of all authorities, missions, and guests during the competitions, official transportation, and at accommodation sites, for the entire duration of their authorized stay.

### 11.2. SECURITY MEASURES

All participating delegations and national staff will be

registered and will receive the appropriate credentials to access the sports venues, lodgings and all sites that they require. The use of accreditation will provide the necessary control and security measures ensuring the smooth flow of personnel while restricting access of non-authorized persons, providing a safe environment for all.

For security, all delegations and personnel will be required to pre-register online at the SUMOC website.

## 12. ENTERTAINMENT

### 12.1. GUIDED TOURS

Gyeongsangbuk-do Province is a region with abundant culture and relics, renowned for the Shilla Buddhist culture of Gyeongju and the Confucian culture of Andong and Yeongju. During the Games period, you will be able to enjoy the beautiful autumn weather with deep blue skies and fields abundant with grain.

Also, a program (bus shuttle service) will be available from the Athletes' Villages to facilitate tours of the region.

### 12.2. CISM MEETING POINT - CISM CLUB

One of the main goals of CISM events is to bring soldiers together through the CISM motto of "Friendship Through Sport."

Accordingly, SUMOC will make available in each Athletes' village a place where the athletes can meet and exchange information.

In each Athletes' Village there will be:

- Information center (transportation, tours, phone, fax, etc.)
- Bank, post office
- Notice board for CISM information
- Laundry room
- Convenience store
- Rest area
- Snack bar (Café)
- Public phones
- Games room
- Internet room
- Display of souvenirs connected with the Games

### 12.3. SOCIAL PROGRAM

Cultural program will be posted on the official website. The program will also be introduced in the Games Guide that missions receive when arriving in Korea.

## 13. INFORMATION COMMUNICATION

### 13.1. INFORMATION SYSTEM

Through the information system, information on the Games and the competitions will be provided to participants and interested persons via a website and through mobile means.

Information on sightseeing, shopping, and host cities will also be provided to the participants and interested persons.

### 13.2. TELECOMMUNICATIONS

Wired and wireless communications networks will be set up to facilitate the smooth running and management of the competitions. Free Wi-Fi will be available for athletes in the Athletes' Village.

During the Games, a temporary post office for receiving and sending domestic and international mail, and a telecom center for handling phone applications and settling fees will be established for the convenience of participants.

## 14. PRESS AND MEDIA SUPPORT

SUMOC will provide an efficient and quality infrastructure for all accredited press that will work before, during and after the Games.

All competition venues will have special areas for the journalists (newspaper, radio, TV, internet) and photographers to provide on-site reporting and broadcasting services.

An international broadcasting transmission signal of the image of the Games will be available. SUMOC will operate a Main Press Center (MPC) and International Broadcasting Center (IBC) near the Main Stadium, as well as smaller press and broadcast centers near most key venues which the accredited press may use freely.

### 14.1. PRESS

Accredited journalists will be provided with free internet and daily competition briefings in all press centers of the Games. Photographers also will have access to photo positions in all fields of play, working

rooms, and will also be supported by a dedicated staff for them.

### 14.2. MEDIA SUPPORT

The radio and TV that will broadcast the Games will also have a dedicated service broadcasting technicians.

Accredited journalists will have access to all official information through the official website. During the event period, SUMOC will provide a Daily Bulletin with the main images of the day.



Handbook II  
**Sports Information**



MUNGYEONG KOREA 2015  
6<sup>th</sup> CISM World Games

제6회 2015 경북문경 세계군인체육대회 조직위원회  
6<sup>th</sup> CISM WORLD GAMES MUNGYEONG KOREA 2015 ORGANIZING COMMITTEE

# TABLE OF CONTENTS

<b>1. General Terms</b> .....	97	<b>9. Sports</b> .....	102
<b>2. Sports Authorities</b> .....	97	9.1. Aeronautical Pentathlon.....	102
<b>3. Official Meetings</b> .....	98	9.2. Archery.....	103
<b>4. Records</b> .....	98	9.3. Basketball.....	104
<b>5. Awards</b> .....	99	9.4. Boxing.....	106
<b>6. Doping Tests</b> .....	100	9.5. Cycling.....	107
<b>7. Team Sports (qualifications)</b> .....	100	9.6. Fencing.....	108
<b>8. General Schedule of Events</b> .....	101	9.7. Football.....	109
		9.8. Golf.....	110
		9.9. Handball.....	111
		9.10. Judo.....	112
		9.11. Marathon.....	113
		9.12. Military Pentathlon.....	114
		9.13. Modern Pentathlon.....	115
		9.14. Naval Pentathlon.....	116
		9.15. Orienteering.....	117
		9.16. Parachuting.....	118
		9.17. Sailing.....	119
		9.18. Shooting.....	120
		9.19. Swimming.....	122
		9.20. Taekwondo.....	124
		9.21. Track & Field.....	125
		9.22. Triathlon.....	127
		9.23. Volleyball.....	128
		9.24. Wrestling.....	130

# 1. GENERAL TERMS

The sports events of the 6th CISM World Games will be organized in accordance with the most recent CISM regulations and the technical rules of the appropriate International Sports Federation, unless otherwise stated.

The drawing of pools or rounds for team sports will be performed in consideration of the program of the competitions and in close collaboration with the

respective CISM Sports Committee.

The most recent performances of the participants must be clearly indicated on the individual entry form where required.

The composition of a Mission explained in "9. Sports" is considered as the maximum and cannot be exceeded. For the number of officials, refer to item 5.1.3 in Handbook I.

# 2. SPORTS AUTHORITIES

The authorities per sport are:

- The Official CISM Representative (OCR)
- The CISM Sport Committee (CSC)
- The Sport Director (SD)
- The Technical Jury (TJ)
- The Jury of Appeal (JA)

## 2.1. OFFICIAL CISM REPRESENTATIVE (OCR)

The overall Official CISM Representative for the 6th WG is the CISM President.

For each of the organized sports at the 6th WG, an OCR will be appointed by the CISM BoD and selected among its Members. However, the BoD may appoint another delegate to officially represent CISM. The OCR cannot act as Chief of Mission at the same time.

The Secretary General officially notifies the designated representatives and SUMOC of the appointment of the OCRs for the Games.

SUMOC will officially invite the OCRs at least three months prior the Games. The invited OCR shall send a response on the invitation to the SUMOC. A copy will be sent to the SG.

If the OCR designated should, at the last minute be unable to attend the Games or to fulfil his/her mission, he/she will ensure the Secretary General that alternative measures shall be taken.

## 2.2. THE CISM SPORT COMMITTEE (CSC)

CISM has a Sport Committee that is responsible for the overall technical aspects of the concerning sport.

During the Games, the role performed by the CSC, and in particular by the President of the CISM Sport Committee (PCSC) is of prime importance.

For details on the exact functions and roles played by the CSC, please refer to the CISM Regulations articles 7.12, 7.13, and 7.14.

## 2.3. THE SPORT DIRECTOR (SD)

For each sport programme of the Games, the SUMOC will appoint a Director. The SD will be in charge of all technical, organizational and administrative matters for that sport.

The SD will work in close contact with the PCSC.

## 2.4. THE TECHNICAL JURY (TJ)

For each sport during the Games, a Technical Jury will be set up. The PCSC appoints the President and members of the TJ during the technical meeting of the technicians attending the championship with deep knowledge of the appropriate sports matters and regulations.

For details on the exact functions and roles played by the TJ, please refer to the CISM Regulations Article 8.12.

## 2.5. THE JURY OF APPEAL (JA)

For each Sport programmed during the Games, a Jury of Appeal will be established.

The JA is appointed during the technical meeting with the OCR as the President. For detailed functions and roles of the JA, refer to CISM Regulations Article 8.13.

# 3. OFFICIAL MEETINGS

The various official meetings held during the Games are essential to a sound organization and are largely responsible for the smooth running of the Games. They are the following:

- Preliminary and Technical meeting
- Meetings of the CISM Sport Committee
- Meeting of the Anti-Doping Commission

- Meetings of the Technical Jury
- Meetings of the Jury of Appeal.

All aspects of these meetings are described in the CISM Regulations. Detailed schedule for meetings and the venues will be announced at a later date.

# 4. RECORDS

All aspects for CISM World Records are described in the CISM Regulations 8.36.

Any civilian World Records should be treated in accordance with the guidance given by the relevant International Sport Federation.

## 5. AWARDS

### 5.1. MEDALS

All information concerning the criteria for the attribution of official medals of the Games are described in the CISM regulations of each sport and CISM Regulations 8.30. The awards will be presented at the end of each competition, at which time the winner(s) will be saluted by the playing of the national anthem, while the national flags of the medal winners are raised.

#### 5.1.1. Individual and relay events

Medals will be awarded to the first three athletes and relay teams in the individual/relay event as follows:

- First - Gold
- Second - Silver
- Third - Bronze

#### 5.1.2. Team Sports

- **Basketball and Handball (men), Football and Volleyball (men and women)**

Medals will be awarded to the first three teams and to the coaches of these teams following the same

distribution as in item 5.1.1. Teams are requested to bring 2 sets of sports clothes with highly contrasting colors.

### 5.2. TROPHIES AND CHALLENGE CUPS

Some sports have trophies or challenge cups donated by authorities. These awards are handed over at the Games and must therefore be passed on by its previous holder to the new winners.

### 5.3. FAIR PLAY CUP

In order to enforce the campaign against violence, a Fair Play Cup will be offered per sport (donated by SUMOC) and an overall one for the Games (donated by CISM).

## 6. DOPING TESTS

The conduct of doping tests is mandatory to all sports performed at the 6th WG. For all other points related to anti-doping regulations, refer to the CISM Regulations Chapter 9 and the most recent regulations from the World Anti-Doping Agency (WADA).

For each sport during the Games, an Anti-Doping Commission will be set up according to Article 8.14 of the CISM Regulations.

Doping tests will be carried out in all sports during the 6th WG. The CISM Anti Doping Regulations and, by consequence, the WADA World Anti-Doping Code will be strictly applied during the tests. The number of tests to be conducted per sport will be decided on the basis of the CISM Sports Regulations. All anti-doping

expenses will be paid by SUMOC. In case of a positive result, the test expenses will be paid by the delegation of the athlete, according to the CISM Anti-Doping Regulations.

Any athlete who takes part in the Games shall be aware of the very latest version of the WADA World Anti-Doping Code and its related list of prohibited substances. All details may be found directly on the WADA Homepage: <http://www.wada-ama.org>.

Any athlete who has received a TUE (Therapeutic Use Exemption) and is called for an anti-doping test, shall hand over a copy of that TUE to the doctor responsible for the test proceedings. No exception or late delivery of a TUE will be allowed.

## 7. TEAM SPORTS (Qualifications)

For reasons of planning, organization and implementation, the team sports competitions will be organized with a limited number of participant teams, as described below:

Sport	Men	Women
Football	10	6
Volleyball	10	6
Basketball	10	-
Handball	8	-

For the men's football tournament, the teams will be selected by a preliminary round on a continental level. For women's football, men's and women's volleyball, and basketball, the concerned CSC will prepare a

ranking list of classification which shall take into account the last 4 years (2011-2014) or last 10 years (2005-2014) of participations.

This list will be handed over to all listed nations by the end of 2014. The qualified countries shall sign a commitment of participation by the Chief of Delegation during the 70th CISM General Assembly 2015. When a nation qualified does not sign the commitment, or decides not to participate, the next team listed in the ranking shall be invited to replace the withdrawn team.

\* Each delegation may apply for a maximum of one team per each gender.

The Republic of Korea, as the host nation, is pre-qualified for all team sports.

## 8. GENERAL SCHEDULE OF EVENTS

ACTIVITY	Tu	W	Th	F	Sa	Su	M	Tu	W	Th	F	Sa	Su	M	Tu	
	9.29	30	10.1	2	3	4	5	6	7	8	9	10	11	12	13	
Opening/Closing of Villages	X		11 Days of Activities											X		
Opening/Closing Ceremonies				X										X		
Aeronautical Pentathlon						F		C	C	C	F					
Archery							C	C	C	F	F					
Basketball					C	C	C	C	C	C	SF	F				
Boxing						C	C	C	C	SF		F				
Cycling								F		F	F					
Fencing						F	F	F	F	F	F					
Football			C	C	C	C	C	C	SF	SF		F				
Golf								C	C	C	F					
Handball						C	C	C		C	SF	F				
Judo					F		F	F								
Marathon													F			
Military Pentathlon					C	C	C	C	C		F					
Modern Pentathlon									C	F	F	F				
Naval Pentathlon									C	C	C	F				
Orienteering									F	F		F				
Parachuting					C	C	C	C	C	C	C	F				
Sailing						C	C	C	F							
Shooting							F	F	F	F	F	F				
Swimming									F	F	F	F				
Taekwondo										F	F	F				
Track & Field						F	F	F	F	F						
Triathlon												F				
Volleyball					C	C	C	C	C	C	SF	SF/F				
Wrestling								F	F		F	F				

\* C - Competition

SF - Semifinal

F - Final

## 9. SPORTS

	Sports (24)	Men	Women
1	Aeronautical Pentathlon	X	X
2	Archery	X	X
3	Basketball	X	-
4	Boxing	X	-
5	Cycling	X	X
6	Fencing	X	X
7	Football	X	X
8	Golf	X	X
9	Handball	X	-
10	Judo	X	X
11	Marathon	X	X
12	Military Pentathlon	X	X
13	Modern Pentathlon	X	X
14	Naval Pentathlon	X	X
15	Orienteering	X	X
16	Parachuting	X	X
17	Sailing	Mixed	X
18	Shooting	X	X
19	Swimming	X	X
20	Taekwondo	X	X
21	Track & Field	X	X
22	Triathlon	X	X
23	Volleyball	X	X
24	Wrestling	X	-

### 9.1. AERONAUTICAL PENTATHLON

#### 9.1.1. Regulations

Military Aeronautical Pentathlon (MAP) events will be organized in accordance with the most recent CISM MAP Regulations as revised by the CISM Aeronautical Pentathlon Committee. The Flying Contest will be organized in the same way.

#### 9.1.2. Events

Military Aeronautical Pentathlon competition consists of the following events:

Subdiscipline	Men	Women
<b>1. Flying Contest</b>		
Aircraft : KT-1	X	X
Altitude : 1,000 ft		
Max. Speed : 649KM/h (350KIAS)		
<b>2. Aeronautical Pentathlon</b>	X	X
① Shooting - Electronic targets	X	X
② Swimming 25m pool with 5m clockwise run	X	X
③ Fencing	X	X
④ Basketball	X	X
⑤ Obstacle Race Obstacle sequence: 2, 4, 5, 6, 7, 9, 10, 12, 14, 17, 18 and 20	X	X
⑥ Orienteering Near Yeongju Dongyang Univ. Est. time 45 min (40 min for women) 7~10 checkpoints	X	X

Aeronautical Pentathlon is open to:

- ① Air Force officers / Cadets on active duty
- ② Other air crew officers (other services)
- ③ Other Air Force military personnel if requested and authorized by the Aeronautical Pentathlon PCSC prior to the competition.
- ④ At least 2 of the team members must be educated in air navigation.

### 9.1.3. Composition of the Mission (maximum)

Function	No.
Team Captain	1
Coach	1
Athletes Men	4
Athletes Women	3
Men Reserve	1
Women Reserve	1
<b>Total</b>	<b>11</b>

\* Missions may bring 1 reserve athlete in addition to the entries

### 9.1.4. Program

Date	Time	Events
10. 4	All Day	Flying Contest / Training
10. 5	All Day	Training
10. 6	Morning	Shooting
	Afternoon	Swimming
10. 7	All Day	Fencing
10. 8	All Day	Basketball (Ball contest)
10. 9	All Day	Obstacle Race and Orienteering
10.10	Morning	Free
	Afternoon	Awards Ceremony

### 9.1.5. Competition Venue

16th Fighter Wing (Flying Contest, Swimming, Fencing, Ball Contest, Obstacle Run), KAFAC facilities (Shooting), Around Dongyang University (Orienteering)

### 9.1.6. Contacts

- **Governance Coordinator**  
Col. YOON Moon-hak  
yoon2964@korea2015mwg.org
- **Sports Manager**  
Lt. Col. LEE Won-jeong  
coriajeong@korea2015mwg.org
- **Aeronautical Pentathlon Manager**  
Maj. JO Hyeong-rae

M.A.pentathlon@korea2015mwg.org

- **Aeronautical Pentathlon Director**

Maj. CHOI Jean  
jean0305@hanmail.net

- **PCSC Aeronautical Pentathlon**

Lt. Col. Pedro Gagliardi  
pcgagliardi@gmail.com

## 9.2. ARCHERY

### 9.2.1. Regulations

Archery events will be organized in accordance with the most recent regulations of the World Archery Federation (WA) also known as FITA. If there are clashes in interpretations of the regulations, the archery regulations of the host nation may be applied as a supplement.

### 9.2.2. Events

Recurve bows will be used. Qualification rounds (720 Round) will be held each for men and women, and final rounds for men and women team, individual and mixed events in accordance with World Archery Federation's Match Play Chart.

### 9.2.3. Composition of the Mission (maximum)

Function	No.
Team Captain	1
Coach Men	1
Coach Women	1
Athletes Men	4
Athletes Women	4
<b>Total</b>	<b>11</b>

\* Identical regulations will be applied to both able-bodied and disabled athletes.

## 9.2.4. Program

Date	Time	Events
10. 5	All Day	<b>Day 1</b> 720 Round Qualifications
10. 6	All Day	<b>Day 2</b> Men&Women Individual 1/32~semifinals
10. 7	All Day	<b>Day 3</b> Men & Women Team 1/8~semifinals Mixed Team 1/8~semifinals
10. 8	All Day	<b>Day 4</b> Men & Women Team finals Mixed Team finals Awards (Team/Mixed team)
10. 9	All Day	<b>Day 5</b> Men & Women Individual Finals Awards

## 9.2.5. Competition Venue

Jinho International Archery Range

## 9.2.6. Contacts

- **Governance Coordinator**  
Col. YOON Moon-hak  
yoon2964@korea2015mwig.org
- **Sports Manager**  
To be determined  
sportsmngt3@korea2015mwig.org
- **Archery Manager**  
Ms. SON Young-seon  
archery@korea2015mwig.org
- **Archery Director**  
Korean Archery Association National Team Coach,  
Mr. JANG Yeong-sool  
archery1440@naver.com
- **PCSC Archery**  
To be determined

## 9.3. BASKETBALL

### 9.3.1. Regulations

Basketball events will be organized in accordance with the most recent regulations of the Fédération Internationale de Basketball (FIBA) and CISM Basketball regulations.

### 9.3.2. Events

Only men will compete with a maximum of 10 teams. Prepared by the Basketball CSC, a ranking list of classification that takes into account the last 10 years of participation (2005-2014) will be sent to all listed nations by the end of 2014. Korea, as the Host Nation, is automatically qualified.

Top seed of Group A is Korea and the top seed of Group B is Brazil, the winner of the 2011 CISM Basketball World Championship. The other 8 teams shall be placed in accordance with the ranking.

A group stage with 2 groups of 5 teams will be followed by quarterfinals, semifinals and finals.

9th and 10th place will be classified according to the average number of points scored in group stage. Losers of quarterfinals will play classifying matches for 5th~8th places.

3rd place match will take place between the losers of semifinals and the finals will take place between the winners.

### 9.3.3. Composition of the Mission (maximum)

Function	No.
Team Captain	1
Coach	1
Assistant Coach	1
International Referee (FIBA)	2
Competitors	12
<b>Total</b>	<b>17</b>

### 9.3.4. Program

Date	Time	Events	Participants
10. 3	Morning	Match 1	A2 : A1
		Match 2	B2 : B1
	Afternoon	Match 3	A3 : A4
		Match 4	B3 : B4
10. 4	Morning	Match 5	B1 : B3
		Match 6	A1 : A3
	Afternoon	Match 7	B5 : B2
		Match 8	A5 : A2
10. 5	Morning	Match 9	A1 : A4
		Match 10	B1 : B4
	Afternoon	Match 11	A3 : A5
		Match 12	B3 : B5
10. 6	Morning	Match 13	B4 : B2
		Match 14	A4 : A2
	Afternoon	Match 15	B5 : B1
		Match 16	A5 : A1
10. 7	Morning	Match 17	A2 : A3
		Match 18	B2 : B3
	Afternoon	Match 19	A4 : A5
		Match 20	B4 : B5
10. 8	Morning	Match 21	A 2nd : B 3rd
		Match 22	A 3rd : B 2nd
	Afternoon	Match 23	A 1st : B 4th
		Match 24	A 4th : B 1st
10. 9	Morning	Match 25	21 Loser : 22 Loser
		Match 26	23 Loser : 24 Loser
	Afternoon	Match 27	21 Winner : 22 Winner
		Match 28	23 Winner : 24 Winner
10. 10	Morning	Match 29	25 Loser : 26 Loser (7th, 8th)
		Match 30	25 Winner : 26 Winner (5th, 6th)
	Afternoon	Match 31	27 Loser : 28 Loser (3rd place match)
		Match 32	27 Winner : 28 Winner (Finals)
	Evening	Awards	

### 9.3.5. Competition Venue

Andong Gymnasium

### 9.3.6. Contacts

- **Governance Coordinator**  
Col. YOON Moon-hak  
yoon2964@korea2015mwg.org
- **Sports Manager**  
To be determined  
sportsmngt3@korea2015mwg.org
- **Basketball Manager**  
Mr. DO Gyu-tae  
basketball@korea2015mwg.org
- **Basketball Director**  
Korean Basketball League  
Director General, Mr. KIM Gab-seon  
kgseon80@naver.com
- **PCSC Basketball**  
Col. Marcio Potengy de Mello  
mpotengy@gmail.com

## 9.4. BOXING

### 9.4.1. Regulations

Boxing events will be organized in accordance with the most recent regulations of the Association International de Boxer Amateur (AIBA) and CISM Boxing regulations.

### 9.4.2. Event

Only men will compete. The following 10 classes will participate in the event.

-49kg, -52kg, -56kg, -60kg, -64kg,  
-69kg, -75kg, -81kg, -91kg, +91kg

### 9.4.3. Composition of the Mission (maximum)

Function	No.
Team Captain	1
Coach	3
Physician/Masseur	1
Referee (AIBA)	2*
Competitors	10
<b>Total</b>	<b>17*</b>

\* If a country brings 1 to 6 athletes, it must bring 1 international referee. If it brings 7 to 10 athletes, it must bring 2 international referees.

### 9.4.4. Program

Date	Time	Participants
10.4	All Day	Weigh-in, Medical Examination
		Training
		Competition - Qualification
10.5	All Day	Weigh-in, Medical Exam
		Training
10.6	All Day	Competition- Qualification
		Weigh-in, Medical Examination
		Training
		Competition - Qualification

		Weigh-in, Medical Examination
10.7	All Day	Training
		Competition - Quarterfinals
10.8	All Day	Weigh-in, Medical Examination
		Training
		Competition - Semifinals
10.9	All Day	Tour/Cultural Events
10.10	All Day	Weigh-in, Medical Examination
		Training
		Competition - Finals

### 9.4.5. Competition Venue

Yeongju Indoor Gym

### 9.4.6. Contacts

- **Governance Coordinator**  
Col. YOON Moon-hak  
yoon2964@korea2015mwig.org
- **Sports Manager**  
To be determined  
sportsmngt3@korea2015mwig.org
- **Boxing Manager**  
Mr. CHOI In-soo  
boxing@korea2015mwig.org
- **Boxing Director**  
AIBA Jury Member Mr. KANG Seok-goo  
koreakang1@hanmail.net
- **PCSC Boxing**  
Col. Nasser Eddine Beldjoudi  
kenainturk@gmail.com

## 9.5. CYCLING

### 9.5.1. Regulations

Cycling events will be organized in accordance with the most recent regulations of the Union Cyclistes International (UCI) and CISM Cycling regulations.

### 9.5.2. Events

Event for men and women will be held.

- 6 subdisciplines.
  - Road Race (4):
    - RR Individual(Team) Men  $\pm$ 120km
    - RR Individual(Team) Women  $\pm$ 80km
    - \* No separate race is held for Team Classification; instead, it is calculated from sum total of the individual road race times of a nation's best racers. (4 for men, 2 for women)
  - Time Trial (2):
    - TT Individual (Team) Men  $\pm$  40km
    - TT Individual (Team) Women  $\pm$  20km
    - \* No team classification for TT.
- Athletes
  - Individual RR: Max. of 8 men / 4 women
  - Individual TT: 2 men / 2 women
  - \* Racers may enter in both TT and RR.

### 9.5.3. Composition of the Mission (maximum)

Function	No.
Team Captain	1
Coach	1
Medical Staff	1
Mechanic	1
Athletes Men	10
Athletes Women	6
<b>Total</b>	<b>20</b>

### 9.5.4. Program

Date	Time	Participants
10. 6	All Day	Individual Time Trial Men 40km Individual Time Trial Women 20km
10. 7	All Day	Rest day
10. 8	All Day	Road Race Individual (Team) Women 80km
10. 9	All Day	Road Race Individual (Team) Men 120km

### 9.5.5. Competition Venue

Around Mungyeong City

### 9.5.6. Contacts

- **Governance Coordinator**  
Col. YOON Moon-hak  
yoon2964@korea2015mwig.org
- **Sports Manager**  
Mr. YOO Nam-sik  
ryoons66@korea2015mwig.org
- **Cycling Manager**  
Mr. YOO Nam-sik  
ryoons66@korea2015mwig.org
- **Cycling Director**  
Korean Cycling Federation Director General,  
Mr. HWANG Sun-bong  
sbh8188@naver.com
- **PCSC Cycling**  
Lt. Col. Wim de Geyter  
wim.degeyter@mil.be

## 9.6. FENCING

### 9.6.1. Regulations

Fencing events will be organized in accordance with the most recent regulations of the Fédération Internationale d'Éscrime (FIE) and CISM Fencing regulations. Both men and women will compete.

### 9.6.2. Events

The following events will take place.

Subdiscipline	Men	Women
Sabre	Individual, Team	Individual, Team
Épée	Individual, Team	Individual, Team
Foil	Individual, Team	Individual, Team

### 9.6.3. Composition of the Mission (maximum)

Function	No.	Note
Team Captain	1	
Coach	3	1 per weapon
Doctor or Physician	1	
Referee(FIE)	3	1 per weapon
Athletes Men	9	3 per weapon
Athletes Women	9	3 per weapon
<b>Total</b>	<b>26</b>	

\* Teams must be accompanied by 1 international referee with FIE qualifications for each weapon.

### 9.6.4. Program

Date	Time	Participants
10. 4	All Day	Individual Sabre Women Individual Foil Men
10. 5	All Day	Individual Foil Women Individual Épée Men
10. 6	All Day	Individual Épée Women Individual Sabre Men
10. 7	All Day	Team Foil Women Team Épée Men

10. 8	All Day	Team Épée Women Team Sabre Men
10. 9	All Day	Team Sabre Women Team Foil Men

\* The schedule can be changed according to the number of participants.

### 9.6.5. Competition Venue

KAFAC Indoor Tennis Courts

### 9.6.6. Contacts

- **Governance Coordinator**  
Col. YOON Moon-hak  
yoon2964@korea2015mwig.org
- **Sports Manager**  
To be determined  
sportsmngt3@korea2015mwig.org
- **Fencing Manager**  
To be determined  
fencing@korea2015mwig.org
- **Fencing Director**  
Korean Fencing Association  
Executive Director Mr. DO Tae-gwan  
taekwan0822@daum.net
- **PCSC Fencing**  
Maj. Petre Ducu  
petreducu@yahoo.com

## 9.7. FOOTBALL

### 9.7.1. Regulations

Football events will be organized in accordance with the most recent regulations of the Fédération Internationale de Football Association (FIFA) and CISM Football regulations.

### 9.7.2. Events

Both men and women will compete. There is a maximum of 10 teams for men and 6 teams for women. The Host Nation (Republic of Korea) and the title holder (Iraq) are automatically qualified. Number of seats per continent is as follows:

- Asia : 2 nations
- Africa : 3 nations
- Americas : 1 nation
- Europe : 2 nations

The Football competition will be played with 4 teams of Group A, 3 teams of Group B and 3 teams of Group C. Women's competition will be played with 2 groups of 3 teams.

### 9.7.3. Composition of the Mission (maximum)

Function	Men	Women
Team Captain	1	1
Trainer/Coach	1	1
Assistant Coach	1	1
Medical staff	2	2
International Referee (FIFA)	1	1
Assistant Referee (FIFA)	1	1
Match Delegate	1	1
Athletes	21	21
<b>Total</b>	<b>58</b>	

### 9.7.4. Program

Date	Time	Participants	
10.1 Round 1	All Day	M1	A1 : A2
		M2	A3 : A4
		M3	B1 : B2
		M4	C1 : C2
10.2 Round 1	All Day	F1	X1 : X2
		F2	W1 : W2
10.3 Round 2	All Day	M5	A1 : A3
		M6	A2 : A4
		M7	B1 : B3
		M8	C1 : C3
10.4 Round 2	All Day	F3	X1 : X3
		F4	W1 : W3
10.5 Round 3	All Day	M9	A1 : A4
		M10	A2 : A3
		M11	B2 : B3
10.6 Round 3	All Day	F5	X2 : X3
		F6	W2 : W3
10.7 Semifinals	All Day	M13	A 1st : C 1st
		M14	A 2nd : C 1st
10.8 Semifinals	All Day	F7	X 1st : W 2nd
		F8	X 2nd : W 1st
10.9	All Day	Rest	All missions
10.10 Finals	Morning	F9	Loser F7 : Loser F8 (3rd place match)
		F10	Winner F7 : Winner F8 (Finals)
	After-noon	F15	Loser M13 : Loser M14 (3rd place match)
		F16	Winner M13 : Winner M14 (Finals)

### 9.7.5. Competition Venue

KAFAC Main Stadium, Sangju Citizens' Stadium, Yeongju Citizens' Stadium, Gimcheon Sports Complex, Andong Citizens' Stadium, Mungyeong Citizens' Stadium, KAFAC Women's Football Pitch

### 9.7.6. Contacts

- **Governance Coordinator**  
Col. YOON Moon-hak  
yoon2964@korea2015mwg.org
- **Sports Manager**  
To be determined  
sportsmngt3@korea2015mwg.org
- **Football Manager**  
To be determined  
football@korea2015mwg.org
- **Football Director**  
Korean Football Association  
Sports Section Chief, Mr. PARK Jin-hoo  
kfa2000@hanmail.net
- **PCSC Football**  
Col. Ayissi Dieudonne  
ayissi2000@yahoo.fr

## 9.8. GOLF

### 9.8.1. Regulations

Golf events will be organized in accordance with the most recent regulations of the United States Golf Association (USGA) or the R&A. The golf regulations of the host nation may be applied as a supplement.

### 9.8.2. Events

The competition will be composed of individual and team medal (stroke) play over 72 holes. Both men and women will compete, in separate categories.

Within the men's individual competition, additional medals will be awarded to players over 40 (Seniors) on the condition that a minimum of 4 Seniors participate.

### 9.8.3. Composition of the Mission (maximum)

Function	No.
Team Captain	1
Athletes Men	6
Athletes Women	2
<b>Total</b>	<b>9</b>

### 9.8.4. Program

Date	Time	Events
10. 6	All Day	Competition Day 1 Team Captains Meeting
10. 7	All Day	Competition Day 2 Team Captains Meeting
10. 8	All Day	Competition Day 3 Team Captains Meeting
10. 9	All Day	Competition Day 4 Awards Ceremony

### 9.8.5. Competition Venue

Andong Golf Course

### 9.8.6. Contacts

- **Governance Coordinator**  
Col. YOON Moon-hak  
yoon2964@korea2015mwg.org
- **Sports Manager**  
To be determined  
sportsmngt3@korea2015mwg.org
- **Golf Manager**  
Mr. CHO Jeong-cheol  
golf@korea2015mwg.org
- **Golf Director**  
Korean Golf Association  
Sports Commission Chairman, Mr. LEE Seong-jae  
hyoLIMLSJ@naver.com
- **PCSC Golf**  
Capt. Ansar Mahmood PN  
ansarraja69@gmail.com

## 9.9. HANDBALL

### 9.9.1. Regulations

Handball events will be organized in accordance with the most recent regulations of the International Handball Federation (IHF) and CISM Handball regulations.

### 9.9.2. Events

Only men will compete with at least 8 nations. Nations wishing to participate may compete. Korea, as the Host Nation, is automatically qualified. 8 teams compete in 2 stages. Consisting of 2 Groups of 4 teams, Korea is the top seed of Group A while that of Group B will be determined by the PCSC.

### 9.9.3. Composition of the Mission (maximum)

Function	No.
Team Captain	1
Coach	1
Physician/attendant	1
IHF Referee / IHF or continental level referee candidates	2
Athletes	16
<b>Total</b>	<b>21</b>

### 9.9.4. Program (for 8 teams)

Date	Time	Participants	
10. 4	Morning	Game 1	A1 : A2
		Game 2	A3 : A4
	Afternoon	Game 3	B3 : B4
		Game 4	B1 : B2
10. 5	Morning	Game 5	A1 : A3
		Game 6	A2 : A4
	Afternoon	Game 7	B1 : B3
		Game 8	B2 : B4

10. 6	Morning	Game 9	A1 : A4
		Game 10	A2 : A3
	Afternoon	Game 11	B1 : B4
		Game 12	B2 : B3
10. 7	All Day	Rest day	All Missions
10. 8	Morning	Game 13	A 3rd : B 3rd
	Afternoon	Game 14	A 4th : B 4th
10. 9	Morning	Game 15	A 1st : B 2nd
	Afternoon	Game 16	A 2nd : B 1st
10. 10	Morning	Game 17	15 Loser : 16 Loser (3rd place match)
	Afternoon	Game 18	15 Winner : 16 Winner (Finals)
	Evening	Awards	

### 9.9.5. Competition Venue

Sangju Indoor Gymnasium

### 9.9.6. Contacts

- **Governance Coordinator**  
Col. YOON Moon-hak  
yoon2964@korea2015mwg.org
- **Sports Manager**  
To be determined  
sportsmngt3@korea2015mwg.org
- **Handball Manager**  
To be determined  
handball@korea2015mwg.org
- **Handball Director**  
Korea Handball League Vice Chairman  
LEE Kyu-jeong  
lkj4515@naver.com
- **PCSC Handball**  
Lt. Col. Teodor Florin Popa  
popateo@yahoo.com

## 9.10. JUDO

### 9.10.1. Regulations

Judo events will be organized in accordance with the most recent regulations of the International Judo Federation (IJF) and CISM Judo regulations. Both men and women will compete.

### 9.10.2. Events

Each mission is authorized to present:

- 1 athlete per individual event
- 1 team composed of a maximum of 5 athletes and minimum of 3 athletes
- Individual event is cancelled if there are less than 6 athletes.

Events	Men	Women
Individual	-60kg	-48kg
	-66kg	-52kg
	-73kg	-57kg
	-81kg	-63kg
	-90kg	-70kg
	-100kg	-78kg
	+100kg	+78kg
Team	-66kg	-52kg
	-73kg	-57kg
	-81kg	-63kg
	-90kg	-70kg
	+90kg	+70kg

### 9.10.3. Composition of the Mission (maximum)

Function	No.
Team Captain	1
Coach Men	1
Coach Women	1
Ad libitum	1
Referee(IJF)	1
Athletes Men	7
Athletes Women	7
Men Reserve	2
Women Reserve	2
<b>Total</b>	<b>23</b>

### 9.10.4. Program

Date	Time	Events
10. 3	All Day	Official weigh-in
		Team competition
		Finals
10. 4	All Day	Rest
10. 5	All Day	Official weigh-in
		Individual competition
		Finals
10. 6	All Day	Official weigh-in
		Individual competition
		Finals

### 9.10.5. Competition Venue

KAFAC Indoor Complex

### 9.10.6. Contacts

- **Governance Coordinator**  
Col. YOON Moon-hak  
yoon2964@korea2015mwig.org
- **Sports Manager**  
To be determined  
sportsmngt3@korea2015mwig.org
- **Judo Manager**  
Mr. KIM Yoo-shin  
judo@korea2015mwig.org
- **Judo Director**  
Korea Judo Federation,  
Mr. JUNG Hoon  
jh@naver.com
- **PCSC Judo**  
Lt. Col. G.F. Sijinhorst  
sijinhorst@kpnmail.nl

## 9.11. MARATHON

### 9.11.1. Regulations

Regulations for Marathon are included in Track & Field regulations (9.20).

### 9.11.2. Events

From the Start Line in the KAFAC, the marathon will be held together with a civilian marathon event.

The event will be canceled if there are 10 or less athletes.

### 9.11.3. Composition of the Mission (maximum)

Function	No.
Coach	1
Athletes Men	3
Athletes Women	3
Ad libitum (Medical staff)	1
<b>Total</b>	<b>8</b>

### 9.11.4. Program

Included in Track & Field.

### 9.11.5. Competition Venue

Around Mungyeong.

### 9.11.6. Contacts

Refer to Track & Field.

## 9.12. MILITARY PENTATHLON

### 9.12.1. Regulations

Military Pentathlon events will be organized in accordance with the most recent CISM Military Pentathlon regulations.

### 9.12.2. Events

Military Pentathlon consists of the following events.

	Events	Men	Women
1	Shooting (300m)	x	x
2	Obstacle Run	x	x
3	Obstacle Swimming	x	x
4	Throwing	x	x
5	Cross Country	x	x
6	Obstacle Relay	x	x

To ensure an appropriate level of performance and limit the number of participants at the 6<sup>th</sup> WG, the following qualification criteria must be met in accordance with CISM Regulations:

- Countries ranked among the top 15 men's teams (or top 6 women's teams) at least once during the previous 3 World Championships may participate with 6 men (or 4 women) competitors.
- All other countries are allowed to participate with up to 6 men (or 4 women) competitors, provided each competitor has met the following qualification requirements.
- Overall individual classification:  
Men: 4,750 pentathlon points  
Women: 4,450 pentathlon points

The point limits must have been met by each competitors individually, who takes part at the respective World Championship. All international competitions since the last but one World Championship (included) are valid for qualification purposes. National competitions will be accepted only as an exception.

However, in case a competitor could not meet the qualification criteria due to extraordinary circumstances (e.g. Equipment malfunction, lack of starting possibilities) the nation may bring forward a request to the PCSC explaining the reasons. In such case, the CSC decides whether to grant participation.

### 9.12.3. Composition of the Mission (maximum)

Function	No.
Team Captain	1
Coach Men	1
Coach Women	1
Medical staff	1
Athletes Men	6
Athletes Women	4
<b>Total</b>	<b>14</b>

### 9.12.4. Program

Date	Time	Events
10. 3	All Day	Shooting (Men)
		Shooting (Women)
10. 4	All Day	Obstacle Run (Women)
		Obstacle Run (Men)
10. 5	Morning	Obstacle Swimming (Men & Women)
10. 6	All Day	Throwing (Women)
		Throwing (Men)
10. 7	Morning	CrossCountry(Men&Women)
10. 8	Morning	Obstacle Relay practice
	Afternoon	Free
10. 9	Morning	Obstacle Relay (Men & Women)
	Afternoon	Awards Ceremony

### 9.12.5. Competition Venue

Korea Army Academy in Yeongcheon

### 9.12.6. Contacts

- **Governance Coordinator**  
Col. YOON Moon-hak  
yoon2964@korea2015mwig.org
- **Sports Manager**  
Lt. Col. LEE Won-jeong  
coriajeong@korea2015mwig.org
- **Military Pentathlon Manager**  
Maj. KIM Pan-sool  
mil.pentathlon@korea2015mwig.org
- **Military Pentathlon Director**  
Lt. Col. SON Hee-Jeong
- **PCSC Military Pentathlon**  
Lt. Col. Alessandro Trono  
axeltrono@libero.it

## 9.13. MODERN PENTATHLON

### 9.13.1. Regulations

Modern Pentathlon events will be organized in accordance with the most recent regulations of the Union Internationale de Pentathlon Moderne (UIPM) and CISM Modern Pentathlon regulations

### 9.13.2. Events

The recently changed UIPM regulations will be applied.

The events will consist of men (individual/team), women (individual/team) and mixed relay (1 man, 1 woman).

The competition format may be changed if there are not at least 8 teams for mixed relay.

### 9.13.3. Composition of the Mission (maximum)

Function	No.
Team Captain	1
Coach Men	1
Coach Women	1

Fencing Coach	1
International Referee (UIPM)	1
Athletes Men	4
Athletes Women	4
<b>Total</b>	<b>13</b>

### 9.13.4. Program

Date	Time	Events
10.7	All Day	Qualifying
10.8	All Day	Finals (Women)
		Training (Men)
10.9	All Day	Finals (Men)
		Training (Women)
10.10	All Day	Mixed Relay, Awards

### 9.13.5. Competition Venue

KAFAC Modern Pentathlon Sports Arena

### 9.13.6. Contacts

- **Governance Coordinator**  
Col. YOON Moon-hak  
yoon2964@korea2015mwig.org
- **Sports Manager**  
Mr. YOO Nam-sik  
ryoons66@korea2015mwig.org
- **Modern Pentathlon Manager**  
To be determined  
mod.pentathlon@korea2015mwig.org
- **Modern Pentathlon Director**  
Korean Modern Pentathlon Federation  
Executive Director, Mr. KIM Young-seon  
kim-ys62@hanmail.net
- **PCSC Modern Pentathlon**  
Maj. Nilton Gomes Rolim Filho  
rolimpenta@hotmail.com

## 9.14. NAVAL PENTATHLON

### 9.14.1. Regulations

Naval Pentathlon events will be organized in accordance with the most recent CISM Naval Pentathlon regulations.

### 9.14.2. Events

Naval Pentathlon is an individual and team competition for male and female competitors, consisting of the following five events, in this sequence:

Events	Male	Female
Obstacle Race	x	x
Lifesaving Swimming	x	x
Utility Swimming	x	x
Seamanship Race	x	x
Amphibious Cross-Country Race	x	x

- Obstacle Race - triple track with two turns;
- Lifesaving - swimming pool with three lanes, 25m length, more than 3m in depth / standard dummy;
- Utility Swimming - swimming pool with two lanes, 25m length, more than 3m in depth / standard shipboard fire-fighting hoses / wood-rubbered rifles;
- Seamanship race - three tracks/bay rowing waters site with 1.0m tide, variation standard PIONER 12 pulling boats;
- Amphibious Cross-Country - two tracks/50m swimming pool paddling site/unpaved road, grass, or asphalt running surface/max 3~4m sea level variation between shooting site, swimming pool and grenades throwing site/wood-rubbered rifles

### 9.14.3. Composition of the Mission (maximum)

Function	No.
Team Captain	1
Coach Men	1
Coach Women	1

Ad libitum	1
Athletes Men	5
Athletes Women	3
<b>Total</b>	<b>12</b>

### 9.14.4. Program

Date	Time	Events
10. 7	Morning	Obstacle Race
	Afternoon	Training
10. 8	Morning	Lifesaving Swimming Race
	Afternoon	Utility Swimming Race
10. 9	Morning	Seamanship Race
10. 10	Morning	Amphibious Cross-Country Race

### 9.14.5. Competition Venue

Pohang Marine 1st Division

### 9.14.6. Contacts

- **Governance Coordinator**  
Col. YOON Moon-hak  
yoon2964@korea2015mwg.org
- **Sports Manager**  
Lt. Col. LEE Won-jeong  
coriajeong@korea2015mwg.org
- **Naval Pentathlon Manager**  
Cmdr. PARK Myeong-gwan  
nav.pentathlon@korea2015mwg.org
- **Naval Pentathlon Director**  
Maj. PARK Pyeong-jong  
ppeacedell@hanmail.net
- **PCSC Naval Pentathlon**  
Lt. Col. Mikael Mickels  
mikael.mickels@mil.se

## 9.15. ORIENTEERING

### 9.15.1. Regulations

Orienteering events will be organized in accordance with the latest regulations of the International Orienteering Federation (IOF) and the CISM Orienteering regulations.

### 9.15.2. Events

For the relay, each mission may enter a maximum of two male teams and one female team (3 competitors per team).

Events:

- Model Event
- Individual Middle Distance
- Individual Long Distance
- Relay

Start Interval:

- Middle Distance (Men and Women) - 2 Minutes
- Long Distance Men - 1 Minute
- Long Distance Women - 2 Minutes

Basis Times of the Race:

Race	Male	Female
Middle Distance	25 minutes	25 minutes
Long Distance	75 minutes	50 minutes
Relay	40 minutes	30 minutes

### 9.15.3. Composition of the Mission (maximum)

Function	No.
Team Captain	1
Coach/Trainer	1
Athletes Men	7
Athletes Women	4
<b>Total</b>	<b>13</b>

### 9.15.4. Program

Date	Time	Events
10.5	All Day	Model event
10.6	All Day	Model event
10.7	All Day	Middle Distance
10.8	All Day	Long Distance
10.9	All Day	Rest
10.10	All Day	Relay

### 9.15.5. Competition Venue

Around Dongyang University Sports Complex

### 9.15.6. Contacts

- **Governance Coordinator**  
Col. YOON Moon-hak  
yoon2964@korea2015mwig.org
- **Sports Manager**  
Lt. Col. LEE Won-jeong  
coriajeong@korea2015mwig.org
- **Orienteering Manager**  
Maj. KIM Byeong-wan  
orienteering@korea2015mwig.org
- **Orienteering Director**  
Korean Orienteering Federation  
Mr. KIM Tea-sun  
foot-o@kof.or.kr
- **PCSC Orienteering**  
Lt. Col. Harald Østbye  
harald.oestbye@c2i.net

## 9.16. PARACHUTING

### 9.16.1. Regulations

Parachuting events will be organized in accordance with the most recent CISM Parachuting regulations as revised by the CISM Parachuting Committee.

### 9.16.2. Events

Freefall style will be included.

The use of the "AAD" is recommended. Chiefs of Mission have to sign a waiver of their nation's liability for any damage that might occur during the jump.

#### Events

- Accuracy (Individual/Team Accuracy)
- Formation Skydive (FS)
- Style (Individual)

#### Aircraft

- UH-60

Helicopter drop speed will be 75kt (FS, ACC, and Style).

### 9.16.3. Composition of the Mission (maximum)

Function	No.
Team Captain	1
Trainer/Coach	1
Judge (FAI/CISM - Qualified in at least 2 categories)	1
Video Cameraman (when competing in FS)	1
Athletes Men	5
Athletes Women	5
<b>Total</b>	<b>14</b>

### 9.16.4. Program

Date	Time	Events
10.3 ~9	All Day	Competitions
10.10	Morning	Competitions (Finals)
	Afternoon	Awards Ceremony

### 9.16.5. Competition Venue

Marine 1st Division, Pohang

### 9.16.6. Contacts

- **Governance Coordinator**  
Col. YOON Moon-hak  
yoon2964@korea2015mwg.org
- **Sports Manager**  
Lt. Col. LEE Won-jeong  
coriajeong@korea2015mwg.org
- **Parachuting Manager**  
Maj. IM Sang-hee  
parachuting@korea2015mwg.org
- **Parachuting Director**  
SGM. LEE Ho-yeun  
hyaj0404@hanmail.net
- **PCSC Parachuting**  
Col. Gernot Rittenschober  
gernot.rittenschober@gmx.at

## 9.17. SAILING

### 9.17.1. Regulations

Sailing events will be organized in accordance with the most recent regulations of the International Sailing Federation (ISAF), Racing Rules of Sailing (RRS) and CISM Sailing regulations.

### 9.17.2. Events

Three regattas of Fleet Race (mixed and female) will be held at Pohang Yeongildae Beach.

Fleet Race mixed and Fleet Race female will race simultaneously. The boats are to be determined.

### 9.17.3. Composition of the Mission (maximum)

Function	No.
Team Captain	1
Trainer/Coach	1
Competitors (Mixed)	2
Competitors (Women)	2
Reserve athlete (Mixed 1, Women 1)	2
Sailing CSC Member*	-
<b>Total</b>	<b>8</b>

\* Applicable only to nations with a CSC Sailing member. Though a part of the mission, it is not counted as one of the mission.

### 9.17.4. Program

Date	Time	Events
10. 4	All Day	Skippers briefing Competition
10. 5	All Day	Skippers briefing Competition
10. 6	All Day	Skippers briefing Competition
10. 7	All Day	Skippers briefing Competition
10. 8	All Day	Spare day

### 9.17.5. Competition Venue

Around Yeongildae Beach, Pohang

### 9.17.6. Contacts

- **Governance Coordinator**  
Col. YOON Moon-hak  
yoon2964@korea2015mwg.org
- **Sports Manager**  
Mr. YOO Nam-sik  
ryoons66@korea2015mwg.org
- **Sailing Manager**  
Mr. KWON Dong-cheol  
sailingkorea2015mwg.org
- **Sailing Director**  
Korean Sailing Association  
Mr. KANG Wal-soo  
ksaf@sports.or.kr
- **PCSC Sailing**  
Lt. Col. Bram Weller  
bram.weller@mweb.co.za

## 9.18. SHOOTING

### 9.18.1. Regulations

Shooting events will be organized according to the most recent regulations of the International Shooting Sports Federation (ISSF) and CISM Shooting Regulations.

### 9.18.2. Events

The competitions will be held in 24 events as follows:

Events	M	W
<b>PISTOL</b>		
25m Centre Fire Pistol-Team	x	-
25m Centre Fire Pistol-Individual	x	-
25m Military Rapid Fire Pistol-Team	x	x
25m Military Rapid Fire Pistol-Individual	x	x
25m Team	-	x
25m Individual	-	x
<b>RIFLE</b>		
300m Standard Rifle 3 Positions-Team	x	-
300m Standard Rifle 3 Positions-Individual	x	-
300m Military Rapid Fire Rifle-Team	x	-
300m Military Rapid Fire Rifle-Individual	x	-
50m Rifle Prone-Team	-	x
50m Rifle Prone-Individual	-	x
50m Rifle 3 Positions-Team	-	x
50m Rifle 3 Positions-Individual	-	x
<b>SHOTGUN</b>		
Trap-Team	x	x
Trap-Individual	x	x
Skeet-Team	x	x
Skeet-Individual	x	x

### 9.18.3. Composition of the Mission (maximum)

Function	No.
Team Captain, Pistol & Rifle	1
Team Captain, Shotgun	1
Coach Rifle Men	1
Coach Pistol Men	1
Coach Women	1
Coach Trap Men	1
Coach Skeet Men	1
Coach Shotgun Women	1
Athletes Rifle Men	3
Athletes Pistol Men	3
Athletes Rifle Women	3
Athletes Pistol Women	3
Athletes Trap Men	3
Athletes Skeet Men	3
Athletes Trap Women	3
Athletes Skeet Women	3
Jury Member, Pistol & Rifle(*)	1
Jury Member, Shotgun(*)	1
<b>Total</b>	<b>34</b>

\* Jury Members: The SUMOC together with the PCSC will determine which countries are requested to bring one or two Jury members (holding an ISSF license A or B), to be appointed at the preliminary meeting to join the Juries. Korea as Host Nation will provide one member for each Jury.

The SUMOC and the PCSC will make the necessary contacts and arrangements so that the nominated countries bring only the necessary number of Jury Members at their own expense.

All participating athletes must bring personal equipment and firearms required for the competition.

### 9.18.4. Program

Date	Time	Events
10.3	All Day	Official Training
	All Day	Equipment Control / Official Training
		300m Standard Rifle-Practice(R1~R2)
10.4	Morning	50m Rifle Women-Practice(R1~R2)
		25m Center-fire PistolMen-Practice(R1~R2)
		Shotgun Trap Men/Women-Practice(R1)

	After-noon	300m Standard Rifle -Practice (R3)	
		25m Center-fire Pistol Men - Practice(R3)	
		25m Pistol Women- Practice(R1~R2)	
		Shotgun Trap Men/Women-Practice(R1)	
10. 5	All Day	Equipment Control/Official Training	
		300m Standard Rifle -Practice (R1~R2)	
	Morning	50m Rifle Women- Practice(R1~R2)	
		25m Center-fire Precision Pistol Men - Team (1~2)	
		Shotgun Trap Men Day 1 50 shots - Individual & Team	
	After-noon	300m Standard Rifle -Practice(R3)	
		25m Center-fire Precision Pistol Men - Team(3)	
		25m Precision Pistol -Women Team(1~2)	
		Shotgun Trap Women 75 shots - Individual & Team(1)	
			Shotgun Trap Women - Finals
10. 6	All Day	Equipment Control/Official Training	
		300m Standard Rifle 3 positions- Team(1~2)	
	Morning	50m Rifle Prone- Women Team(1~2)	
		25m Center-fire Rapid Pistol Men Team(1~2)	
			Shotgun Trap Men Day 2 75 shots -Individual & Team
	After-noon	300m Standard Rifle 3 positions-Team(3)	
25m Center-fire Rapid Pistol Men Team (3)			
25m Rapid Pistol Women Team(1~2)			
		Shotgun Trap Men Individual Finals	
10. 7	All Day	Equipment Control/Official Training	
		300m Standard Men Individual(1)	
	Morning	50m Rifle Prone Women Individual(1)	
		25m Center-fire Pistol Men Individual(1)	
		Shotgun Skeet Men/Women - Practice	
	After-noon	25m Pistol Women Individual(1)	
Shotgun Skeet Men/Women - Practice			
10. 8	All Day	Equipment Control/Official Training	
		300m Military Rapid Fire Men-Practice(R1~R2)	
	Morning	50m 3 position Rifle Women-Practice(R1)	
		25m Military Rapid Fire Pistol Men -Practice(R1~R2)	
		Shotgun Skeet Men Day 1 50 shots -Individual & Team	
		300m Military Rapid Fire Men-Practice(R3)	
	After-noon	25m Military Rapid Fire Pistol Men-Practice(R3)	
		50m 3 position Rifle Women - Practice(R2)	
		25m Military Rapid Fire Pistol Women - Practice (R1~R2)	
		Shotgun Skeet Women 75 shots - Individual & Team	
Shotgun Skeet Women- Finals			

10. 9	All Day	Equipment Control/Official Training
		300m Military Rapid Fire Rifle Team(1~2)
	Morning	50m 3 position Rifle Women Team(1)
		25m Military Rapid Fire Pistol Men Team(1~2)
After-noon	Shotgun Skeet Men Day 2 75 shots - Individual & Team	
	300m Military Rapid Fire Rifle Team(3)	
	50m 3 position Rifle Women Team(2)	
	25m Military Rapid Fire Pistol Men Team (3)	
	25m Military Rapid Fire Pistol Women Team (1~2)	
		Shotgun Skeet Men- Finals
10. 10	All Day	Equipment Control/Official Training
		300m Military Rapid Fire Rifle Men - Individual(1)
	Morning	50m 3 position Rifle Women Individual(1)
		25m Military Rapid Fire Pistol Men -Individual(1)
	After-noon	25m Military Rapid Fire Pistol Women - Individual(1)
		Awards

### 9.18.5. Competition Venue

Daegu Shooting Complex,  
Yeongcheon Gogyong Shooting Range

### 9.18.6. Contacts

- **Governance Coordinator**  
Col. YOON Moon-hak  
yoon2964@korea2015mwg.org
- **Sports Manager**  
Mr. YOO Nam-sik  
ryoons66@korea2015mwg.org
- **Shooting Manager**  
Mr. KIM Kyeong-soo  
shooting@korea2015mwg.org
- **Shooting Director**  
Korea Shooting Federation  
Mr. YOON Deok-ha  
yoondh308@naver.com
- **PCSC Shooting**  
Lt. Col. Bruno Wolfensberger  
bwolfensberger@gmail.com

## 9.19. SWIMMING

### 9.19.1. Regulations

Swimming events will be organized in accordance with the most recent regulations of the Fédération Internationale de Natation Amateur (FINA) and CISM Swimming regulations.

### 9.19.2. Events

The swimming events consist of the following.

Events		M	W
Freestyle	1 50m	x	x
	2 100m	x	x
	3 200m	x	x
	4 400m	x	x
	5 800m	-	x
	6 1500m	x	-
Backstroke	7 50m	x	x
	8 100m	x	x
	9 200m	x	x
Breaststroke	10 50m	x	x
	11 100m	x	x
Butterfly	12 200m	x	x
	13 50m	x	x
	14 100m	x	x
Individual	15 200m	x	x
	16 200m	x	x
Medley	17 400m	x	-
	18 4x100m - Freestyle	x	x
Relay	19 4x200m - Freestyle	x	-
	20 4x100m - Medley	x	x
Mixed Relay	21 4x100m - Freestyle	x	
	22 4x100m - Medley	x	

Each team may enter a maximum of:

- Two (2) athletes per individual event;
- One (1) team in each relay event.
- Two (2) men and women each as one (1) team in

mixed relay.

SUMOC will cancel some disciplines in case less than six (6) competitors are enlisted after receiving the 2nd Preliminary Agreement (by 15 March 2015). The organizers will inform the participants soon after deciding to cancel the discipline.

### 9.19.3. Composition of the Mission (maximum)

Function	No.
Team Captain	1
Coach*	2
Physician/Trainer	1
Athletes Men	6
Athletes Women	6
<b>Total</b>	<b>16</b>

\* Missions must bring 1 coach if there are less than 10 athletes and 2 coaches if 10 or more athletes.

### 9.19.4. Program

Date	Time	Events	
10. 7	Morning	QUALIFICATIONS	
		50m Freestyle Women	
		50m Freestyle Men	
		100m Backstroke Women	
		100m Backstroke Men	
		200m Butterfly Women	
		200m Butterfly Men	
		200m Breaststroke Women	
		200m Breaststroke Men	
		800m Freestyle Women	
		4x200m Freestyle Relay Men	
		Afternoon	FINALS
			50m Freestyle Women
			50m Freestyle Men
	100m Backstroke Women		
	100m Backstroke Men		
	200m Butterfly Women		
	200m Butterfly Men		
	200m Breaststroke Women		
	200m Breaststroke Men		
	800m Freestyle Women		
	4x200m Freestyle Relay Men		

10. 8	Morning	QUALIFICATIONS
		100m Freestyle Women
		100m Freestyle Men
		400m Medley Men
		50m Butterfly Women
		50m Butterfly Men
		1500m Freestyle Men
		4x100m Medley Relay Women
	4x100m Medley Relay Men	
	Afternoon	FINALS
		100m Freestyle Women
		100m Freestyle Men
		400m Medley Men
		50m Butterfly Women
		50m Butterfly Men
		1500m Freestyle Men
4x100m Medley Relay Women		
4x100m Medley Relay Men		
10. 9	Morning	QUALIFICATIONS
		200m Freestyle Women
		200m Freestyle Men
		200m Medley Women
		200m Medley Men
		100m Breaststroke Women
		100m Breaststroke Men
		50m Backstroke Women
	50m Backstroke Men	
	4x100m Freestyle Relay Mixed	
	Afternoon	FINALS
		200m Freestyle Women
		200m Freestyle Men
		200m Medley Women
		200m Medley Men
		100m Breaststroke Women
100m Breaststroke Men		
50m Backstroke Women		
50m Backstroke Men		
4x100m Freestyle Relay Mixed		
10. 10	Morning	QUALIFICATIONS
		4x100m Freestyle Relay Women
		4x100m Freestyle Relay Men
		50m Breaststroke Women
		50m Breaststroke Men
		100m Butterfly Women
100m Butterfly Men		

10. 10		200m Backstroke Women
		200m Backstroke Men
		400m Freestyle Women
		400m Freestyle Men
		4x100m Medley Relay Mixed
		FINALS
		4x100m Freestyle Relay Women
		4x100m Freestyle Relay Men
	Afternoon	50m Breaststroke Women
		50m Breaststroke Men
		100m Butterfly Women
		100m Butterfly Men
		200m Backstroke Women
		200m Backstroke Men
		400m Freestyle Women
		400m Freestyle Men
4x100m Medley Relay Mixed		

### 9.19.5. Competition Venue

Gimcheon Indoor Swimming Arena

### 9.19.6. Contacts

- **Governance Coordinator**  
Col. YOON Moon-hak  
yoon2964@korea2015mwg.org
- **Sports Manager**  
Mr. YOO Nam-sik  
ryoons66@korea2015mwg.org
- **Swimming Manager**  
Mr. AHN Yong-gu  
swimming@korea2015mwg.org
- **Swimming Director**  
Korean Swimming Federation  
Expert Commissioner Mr. HA Wonil  
wonil2875@hanmail.net
- **PCSC Swimming**  
Lt. Col. Heiko Woempener  
HeikoWoempener@bundeswehr.org

## 9.20. TAEKWONDO

### 9.20.1. Regulations

Taekwondo events will be organized in accordance with the most recent regulations of the World Taekwondo Federation (WTF) and CISM Taekwondo regulations.

### 9.20.2. Events

Both men and women will compete.

Events	Men	Women
Individual	- 54kg	- 46kg
	+ 54~58kg	+ 46~49kg
	+ 58~63kg	+ 49~53kg
	+ 63~68kg	+ 53~57kg
	+ 68~74kg	+ 57~62kg
	+ 74~80kg	+ 62~67kg
	+ 80~87kg	+ 67~73kg
	+ 87kg	+73kg

If a category has less than 6 competitors, it will be cancelled. The organizers will inform the participants soon after deciding to cancel the category.

### 9.20.3. Composition of the Mission (maximum)

Function	No.
Team Captain	1
Coach Men	1
Coach Women	1
Medical staff	1
International Referee (WTF)*	2
Athletes Men	8
Athletes Women	8
<b>Total</b>	<b>22</b>

\* If a mission brings 1 to 8 athletes, it must bring 1 International Referee  
If a mission brings 9 to 16 competitors, it must bring 2 International Referees

### 9.20.4. Program

Date	Time	Events
10. 8	All Day	Credentials/dobok check
		Training
		Competitions
10. 9	All Day	Credentials/dobok check
		Training
		Competitions
10. 10	All Day	Credentials/dobok check
		Training
		Competitions

### 9.20.5. Competition Venue

KAFAC Indoor Sports Complex

### 9.20.6. Contacts

- **Governance Coordinator**  
Col. YOON Moon-hak  
yoon2964@korea2015mwig.org
- **Sports Manager**  
To be determined  
sportsmngt3@korea2015mwig.org
- **Taekwondo Manager**  
Mr. PARK Han-kyu  
taekwondo@korea2015mwig.org
- **Taekwondo Director**  
Korean Taekwondo Association  
Operations Director, Mr. KIM Moo-cheon  
mmmckim@hanmail.net
- **PCSC Taekwondo**  
To be determined

## 9.21 TRACK & FIELD

### 9.21.1. Regulations

Track & Field events will be organized in accordance with the most recent regulations of the International Amateur Athletic Federation (IAAF) and CISM Track & Field regulations.

### 9.21.2. Events

Both men and women will compete. Each team may enter a maximum of:

- Two (2) athletes per individual event
- One (1) team in each relay race.

Events for disabled athletes with the same disciplines as Warendorf '13 will also be held.

The organizers will cancel some disciplines in case of receiving a number of entries (by the 2nd Preliminary Agreement, due 15 March 2015) less than:

- 6 or less competitors for individual discipline

DISCIPLINES	EVENTS	M	W	D.A.	
				M	W
Running	1 100m	x	x	x	x
	2 200m	x	x	x	x
	3 400m	x	x	-	-
	4 800m	x	x	-	-
	5 1500m	x	x	x	x
	6 5000m	x	x	-	-
	7 10000m	x	-	-	-
	8 100m Hurdles	-	x	-	-
	9 110m Hurdles	x	-	-	-
	10 400m Hurdles	x	x	-	-
	11 3000m Steeplechase	x	x	-	-
	12 4x100m Relay	x	x	-	-
	13 4x400m Relay	x	x	-	-
	14 Marathon	x	x	-	-
Jumping	15 High Jump	x	x	-	-
	16 Long Jump	x	x	-	-
	17 Triple Jump	x	x	-	-
	18 Pole Vault	x	x	-	-

Throwing	19 Shot Put	x	x	x	x
	20 Discus	x	x	-	-
	21 Javelin	x	x	-	-
	22 Hammer	x	x	-	-

### 9.21.3. Composition of the Mission (maximum)

Function	No.
Team Captain	1
Coach	3
Medical staff	1
Athletes	25(excluding Marathon)
Disabled Athletes	Separate
<b>Total</b>	<b>30</b>

If the mission does not have a full entry, the following conditions will be followed.

No. of Competitors	Captain	Coach/Trainer	Medical staff
1~5	-	1	-
6~10	1	1	-
11~15	1	2	1
16~25	1	3	1

### 9.21.4. Program

Date	Time	Events		
10. 4	Afternoon	Pole Vault Women - Finals		
		400m Hurdles Men - 1R(3)		
		Shot Put Women - Finals		
		High Jump Men - Qualification(A,B)		
		800m Men - 1R(5)		
		Triple Jump Men - Qualification(A,B)		
		Javelin Women - Finals		
		High Jump Women - Finals		
		800m Women - 1R(2)		
		100m Men - 1R(6)		
		3000m Steeplechase Women - Finals		
		110m Hurdles Men - 1R(2)		
		10. 5	Morning	Long Jump Men - Qualification(A,B)
				100m Men- Semifinals(3)

Date	Time	Events		
10. 5	Afternoon	400m Men - 1R(5)		
		10000m Men - 1R(2)		
		400m Hurdles Men - Finals		
		Javelin Men - Finals		
		High Jump Men - Finals		
		400m Hurdles Women - 1R(2)		
		800m Men - Semifinals(3)		
		800m Women - Finals		
		5000m Women - Finals		
		5000m Men - 1R(3)		
10. 6	Morning	400m Men - Semifinals(4)		
		400m Women - 1R(2)		
		100m Women - 1R(3)		
		1500m Men - 1R(4)		
		Shot Put Men - Finals		
10. 6	Afternoon	Triple Jump Women - Finals		
		100m Hurdles Women - 1R(2)		
		10000m Men - Finals		
		400m Hurdles Women - Finals		
		Hammer Men - Finals		
		400m Men - Finals		
		Triple Jump Men - Finals		
		800m Men - Finals		
		110m Hurdles Men - Finals		
		100m Men - Finals		
		100m Women - Finals		
		4x400m Relay Women - Finals		
		10. 7	Morning	200m Men - 1R(6)
				200m Women - 1R(3)
1500m Men - Semifinals(2)				
4x400m Relay Men - 1R(2)				
Hammer Women - Finals				
10. 7	Afternoon	Long Jump Men - Finals		
		3000m Steeplechase Men - Finals		
		200m Men - Semifinals(3)		
		Discus Women - Finals		
		100m Hurdles Women - Finals		
		400m Women - Finals		
		1500m Women - Finals		
		4x100m Relay Men - 1R(3)		

Date	Time	Events
10. 8	Afternoon	Pole Vault Men - Finals
		200m Men - Finals
		200m Women - Finals
		Discus Men - Finals
		Long Jump Women - Finals
		1500m Men - Finals
		5000m Men - Finals
		4x400m Relay Men - Finals
		4x100m Relay Women - Finals
		4x100m Relay Men - Finals
10. 11	Morning	Marathon(*)

\* The Marathon will be held together with the Mungyeong City Marathon.

### 9.21.5. Competition Venue

Main Venue:

- KAFAC Main Stadium

Training Fields:

- Track Competition: KAFAC Track & Field Training Field
- Field Competition: KAFAC Rugby Field

Marathon Venue:

- Around Mungyeong

### 9.21.6. Contacts

- **Governance Coordinator**

Col. YOON Moon-hak  
yoon2964@korea2015mwig.org

- **Sports Manager**

Mr. YOO Nam-sik  
ryoons66@korea2015mwig.org

- **Track & Field/Marathon Director**

Mr. CHO Hyeong-gi  
trackandfield@korea2015mwig.org

- **PCSC Track & Field**

Col. Vincenzo Parrinello  
parrinello@fiammegialle.org

## 9.22. TRIATHLON

### 9.22.1. Regulations

Triathlon event will be organized in accordance with the most recent regulations of the International Triathlon Union (ITU) and CISM Triathlon regulations.

### 9.22.2. Events

Both men and women will compete in Elite and Senior categories each.

For Senior women, athletes must be at least 35 and for men, at least 40 by December 31st 2015.

### 9.22.3. Composition of the Mission (maximum)

Function	No.
Team Captain	1
Coach	1
International Referee*	1
Medical staff	1
Athletes Men (Elite)	6
Athletes Women (Elite)	6
Athletes Men (Senior)	3
Athletes Women (Senior)	2
<b>Total</b>	<b>21</b>

\* Missions must bring ITU or Continental level referee

### 9.22.4. Program

Date	Time	Events
10.10	Morning	Competition - Women, Awards
	Afternoon	Competition - Men, Awards

### 9.22.5. Competition Venue

Around Yeongildae Beach in Pohang

### 9.22.6. Contacts

- **Governance Coordinator**  
Col. YOON Moon-hak  
yoon2964@korea2015mwg.org
- **Sports Manager**  
Mr. YOON Nam-sik  
ryoons66@korea2015mwg.org
- **Triathlon Manager**  
Mr. PARK Bong-Hwan  
triathlon@korea2015mwg.org
- **Triathlon Director**  
Busan Triathlon Federation  
Executive Director, Mr. PARK Chan-ho  
chanhoLab@hanmail.net
- **PCSC Triathlon**  
Lt. Col. Olivier Penin  
olivierpenin50@gmail.com

## 9.23. VOLLEYBALL

### 9.23.1. Regulations

Volleyball events will be organized in accordance with the most recent regulations of the Fédération Internationale de Volleyball (FIVB) and CISM Volleyball regulations.

### 9.23.2. Events

Both men and women will compete. The Volleyball Competition will be played with 10 male and 6 female teams. Korea, as the Host Nation, is automatically qualified.

For men, 2 Groups of 5 teams will compete. The top seed of Group A is Korea. The top seed of Group B is the winner of the last CISM World Volleyball Championship in accordance with CISM regulations.

For 6 female teams, the CISM Volleyball CSC shall determine the entrants.

### 9.23.3. Composition of the Mission (maximum)

Composition	Men	Women
Team Captain	1	1
Coach	1	1
Assistant Coach	1	1
Medical staff	1	1
Referee(FIVB)	1	1
Athletes	12	12
<b>Total</b>	<b>34</b>	

## 9.23.4. Program

### 9.23.4.1 Men's Competition

Date	Time	Events	Participants
10. 3	All Day	Men Match 1	A1 : A2
		Men Match 2	B4 : B3
		Men Match 3	B1 : B2
		Men Match 4	A4 : A3
10. 4	All Day	Men Match 5	B3 : B1
		Men Match 6	A2 : A5
		Men Match 7	A3 : A1
		Men Match 8	B2 : B5
10. 5	All Day	Men Match 9	A5 : A1
		Men Match 12	B5 : B1
		Men Match 11	A4 : A2
		Men Match 12	B4 : B2
10. 6	All Day	Men Match 13	A1 : A4
		Men Match 14	B4 : B1
		Men Match 15	A5 : A3
		Men Match 16	B5 : B3
10. 7	All Day	Men Match 17	B2 : B3
		Men Match 18	A3 : A2
		Men Match 19	B5 : B4
		Men Match 20	A4 : A5
10. 8	All Day	Rest (Training)	All missions
10. 9	All Day	Men Match 21 (9th place match) at Badminton Arena	5th (Group A) : 5th (Group B)
		Men Match 22 (7th place match) at Badminton Arena	4th (Group A) : 4th (Group B)
		Men Match 23 (5th place match)	3rd (Group A) : 3rd (Group B)
		Men Match 24 (S/F 1)	1st (Group A) : 2nd (Group B)
		Men Match 25 (S/F 2)	1st (Group B) : 2nd (Group A)

Date	Time	Events	Participants
10. 10	All Day	Men Match 26 (3rd place match)	S/F 1 Loser : S/F 2 Loser
		Men Match 27 (Finals)	S/F 1 Winner : S/F 2 Winner
		Awards	All missions

#### 9.23.4.2 Women's Competition

Date	Time	Events	Participants
10. 3	All Day	Women Match 1	A1 : A2
		Women Match 2	A4 : A3
		Women Match 3	A5 : A6
10. 4	All Day	Women Match 4	A3 : A1
		Women Match 5	A2 : A5
		Women Match 6	A6 : A4
10. 5	All Day	Women Match 7	A2 : A6
		Women Match 8	A5 : A3
		Women Match 9	A4 : A1
10. 6	All Day	Rest (Training)	All missions
10. 7	All Day	Women Match 10	A6 : A3
		Women Match 11	A2 : A4
		Women Match 12	A5 : A1
10. 8	All Day	Women Match 13	A4 : A5
		Women Match 14	A1 : A6
		Women Match 15	A3 : A2
10. 9	All Day	Rest (Training)	All missions
10. 10	All Day	Women Match 16 (3rd place match) at Indoor Gymnasium	4th (Group A) : 3rd (Group A)
		Women Match 17 (Finals) at Indoor Gymnasium	1st (Group A) : 2nd (Group A)
		Afternoon	Awards

#### 9.23.5. Competition Venue

Gimcheon Indoor Gymnasium (Men)  
Gimcheon Badminton Arena (Women)

#### 9.23.6. Contacts

- **Governance Coordinator**  
Col. YOON Moon-hak  
yoon2964@korea2015mwg.org
- **Sports Manager**  
To be determined  
sportsmngt3@korea2015mwg.org
- **Volleyball Manager**  
To be determined  
volleyball@korea2015mwg.org
- **Volleyball Director**  
Korea Volleyball Association Director  
General, Mr. PARK Beom-chang  
toss1588@naver.com
- **PCSC Volleyball**  
Lt. Col. Jose Carlos S. Pinheiro  
ltcolpinheiro.cism@gmail.com

## 9.24. WRESTLING

### 9.24.1. Regulations

Wrestling events will be organized according to the most recent regulations of the Federation International de Luttes Associes (FILA) and the CISM Wrestling regulations. Only men will compete.

### 9.24.2. Events

World Military Wrestling Championships include Freestyle and Greco-Roman style. At least 6 countries for Freestyle and 6 countries for Greco-Roman style must participate in the championship.

Events	Greco-Roman (M)	Free style (M)
Individual	59kg	57kg
	66kg	61kg
	71kg	65kg
	75kg	70kg
	80kg	74kg
	85kg	86kg
	98kg	97kg
	130kg	125kg

### 9.24.3. Composition of the Mission (maximum)

Function	No.
Team Captain	1
Coach	3
Medical staff	1
International Referee (FILA)*	3
Athletes Men	16
<b>Total</b>	<b>24</b>

\* For 4 or more athletes, the delegation must bring 1 international referee.  
For 10 or more athletes, the delegation must bring 1-3 international referees.

### 9.24.4. Program

Date	Time	Events
10. 5	Afternoon	Checkup/weigh-in (Freestyle)
10. 6	All Day	Competitions (Freestyle) Checkup/weigh-in, Finals (Freestyle)
10. 7	All Day	Competitions (Freestyle) Checkup/weigh-in, Finals (Freestyle)
10. 8	All Day	Rest Day
	Afternoon	Checkup/weigh-in (Greco-Roman)
10. 9	All Day	Competitions (Greco-Roman) Checkup/weigh-in, Finals (Greco-Roman)
10. 10	Morning	Competitions (Greco-Roman)
	Afternoon	Competitions, Finals (Greco-Roman)

### 9.24.5. Competition Venue

Mungyeong Indoor Gymnasium

### 9.24.6. Contacts

- **Governance Coordinator**  
Col. YOON Moon-hak  
yoon2964@korea2015mwig.org
- **Sports Manager**  
To be determined  
sportsmngt3@korea2015mwig.org
- **Wrestling Manager**  
Mr. YOON Il-soo  
wrestling@korea2015mwig.org
- **Wrestling Director**  
Korea Wrestling Association  
Executive Director, Mr. KIM Kee-jeong  
tyska@naver.com
- **PCSC Wrestling**  
To be determined





**MUNGYEONG KOREA 2015**  
6<sup>th</sup> CISM World Games

---

**Publication** April 28, 2014

**Published by** 6<sup>th</sup> CISM World Games Mungyeong Korea 2015 Organizing Committee (KIM Sang-ki)

**Address** 140-701 Itaewonro 22, Yongsan-gu, Seoul, Korea  
Tel. +82-2-748-5666 [www.korea2015mwg.org](http://www.korea2015mwg.org)

**Design by** THESEVEN Tel. +82-2-2038-7700





**CISM**



MUNGYEONG KOREA 2015  
6<sup>th</sup> CISM World Games

[www.cismmilsport.org](http://www.cismmilsport.org)

[www.korea2015mwg.org](http://www.korea2015mwg.org)